

## UBE2O Polyclonal Antibody

**catalog number: E-AB-67078**

**Note:** Centrifuge before opening to ensure complete recovery of vial contents.

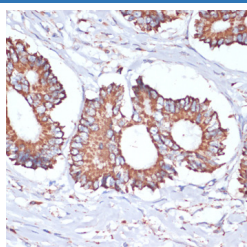
### Description

<b>Reactivity</b>	Human
<b>Immunogen</b>	Recombinant fusion protein of human UBE2O (NP_071349.3).
<b>Host</b>	Rabbit
<b>Isotype</b>	IgG
<b>Purification</b>	Affinity purification
<b>Buffer</b>	Phosphate buffered solution, pH 7.4, containing 0.05% stabilizer and 50% glycerol.

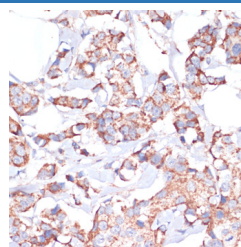
### Applications

Applications	Recommended Dilution
IHC	1:50-1:200

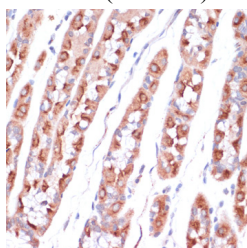
### Data



Immunohistochemistry of paraffin-embedded Human colon carcinoma using UBE2O Polyclonal Antibody at dilution of 1:100 (40x lens).



Immunohistochemistry of paraffin-embedded Human breast cancer using UBE2O Polyclonal Antibody at dilution of 1:100 (40x lens).



Immunohistochemistry of paraffin-embedded Human stomach using UBE2O Polyclonal Antibody at dilution of 1:100 (40x lens).

### Preparation & Storage

<b>Storage</b>	Store at -20°C Valid for 12 months. Avoid freeze / thaw cycles.
<b>Shipping</b>	The product is shipped with ice pack, upon receipt, store it immediately at the temperature recommended.

### Background

UBE2O (Ubiquitin Conjugating Enzyme E2 O) is a Protein Coding gene. Diseases associated with UBE2O include Pontocerebellar Hypoplasia, Type 2A. Among its related pathways are Innate Immune System and Class I MHC mediated antigen processing and presentation. Gene Ontology (GO) annotations related to this gene include ubiquitin-protein transferase activity. An important paralog of this gene is UBE2Z.

### For Research Use Only