

FHL3 Polyclonal Antibody

catalog number: E-AB-11238

Note: Centrifuge before opening to ensure complete recovery of vial contents.

Description

Reactivity	Human;Mouse
Immunogen	Recombinant protein of human FHL3
Host	Rabbit
Isotype	IgG
Purification	Affinity purification
Buffer	Phosphate buffered solution, pH 7.4, containing 0.05% stabilizer and 50% glycerol.

Applications Recommended Dilution

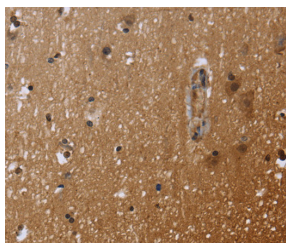
WB	1:1000-1:5000
IHC	1:50-1:200

Data

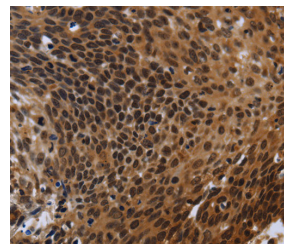


Western Blot analysis of Mouse skeletal muscle tissue using FHL3 Polyclonal Antibody at dilution of 1:1600

Calculated-MW:31 kDa



Immunohistochemistry of paraffin-embedded Human brain using FHL3 Polyclonal Antibody at dilution of 1:40



Immunohistochemistry of paraffin-embedded Human cervical cancer using FHL3 Polyclonal Antibody at dilution of 1:40

Preparation & Storage

Storage	Store at -20°C Valid for 12 months. Avoid freeze / thaw cycles.
Shipping	The product is shipped with ice pack, upon receipt, store it immediately at the temperature recommended.

Background

For Research Use Only

The protein encoded by this gene is a member of a family of proteins containing a four-and-a-half LIM domain, which is a highly conserved double zinc finger motif. The encoded protein has been shown to interact with the cancer developmental regulators SMAD2, SMAD3, and SMAD4, the skeletal muscle myogenesis protein MyoD, and the high-affinity IgE beta chain regulator MZF-1. This protein may be involved in tumor suppression, repression of MyoD expression, and repression of IgE receptor expression. Two transcript variants encoding different isoforms have been found for this gene.

For Research Use Only

Toll-free: 1-888-852-8623
Web: www.elabscience.com

Tel: 1-832-243-6086
Email: techsupport@elabscience.com

Fax: 1-832-243-6017

Rev. V1.8