

PLA2G10 Polyclonal Antibody

catalog number: E-AB-90118

Note: Centrifuge before opening to ensure complete recovery of vial contents.

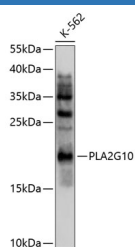
Description

Reactivity	Human
Immunogen	A synthetic peptide of human PLA2G10
Host	Rabbit
Isotype	IgG
Purification	Affinity purification
Buffer	Phosphate buffered solution, pH 7.4, containing 0.05% stabilizer and 50% glycerol.

Applications Recommended Dilution

WB	1:500-1:2000
-----------	--------------

Data



Western blot analysis of extracts of K562 cells using PLA2G10 Polyclonal Antibody at 1:1000 dilution.

Observed-MV:18 kDa

Calculated-MV:18 kDa

Preparation & Storage

Storage	Store at -20°C Valid for 12 months. Avoid freeze / thaw cycles.
Shipping	The product is shipped with ice pack, upon receipt, store it immediately at the temperature recommended.

Background

This gene encodes a member of the phospholipase A2 family of proteins. Alternative splicing results in multiple transcript variants, at least one of which encodes a preproprotein that is proteolytically processed to generate the mature enzyme. This calcium-dependent enzyme hydrolyzes glycerophospholipids to produce free fatty acids and lysophospholipids. In one example, this enzyme catalyzes the release of arachidonic acid from cell membrane phospholipids, thus playing a role in the production of various inflammatory lipid mediators, such as prostaglandins. The encoded protein may promote the survival of breast cancer cells through its role in lipid metabolism.

For Research Use Only