

## Recombinant Mouse IL15RA/CD215 Protein (Fc Tag)

**Catalog Number:** PKSM041053

**Note:** Centrifuge before opening to ensure complete recovery of vial contents.

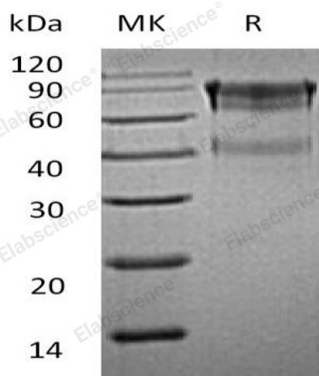
### Description

<b>Species</b>	Mouse
<b>Source</b>	HEK293 Cells-derived Mouse IL15RA/CD215 protein Gly33-Lys205 , with an C-terminal Fc
<b>Calculated MW</b>	45.5 kDa
<b>Observed MW</b>	60-90 kDa
<b>Accession</b>	Q60819
<b>Bio-activity</b>	Measured by its ability to block human IL-15-induced proliferation of CTLL- 2 mouse cytotoxic T cells. The ED <sub>50</sub> for this effect is 0.5-2 ng/ml.

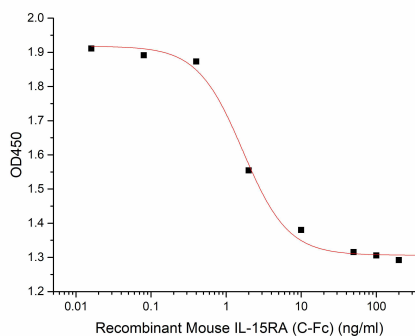
### Properties

<b>Purity</b>	> 90 % as determined by reducing SDS-PAGE.
<b>Endotoxin</b>	< 1.0 EU per µg of the protein as determined by the LAL method.
<b>Storage</b>	Generally, lyophilized proteins are stable for up to 12 months when stored at -20 to -80°C. Reconstituted protein solution can be stored at 4-8°C for 2-7 days. Aliquots of reconstituted samples are stable at < -20°C for 3 months.
<b>Shipping</b>	This product is provided as lyophilized powder which is shipped with ice packs.
<b>Formulation</b>	Lyophilized from a 0.2 µm filtered solution of 20mM PB, 150mM NaCl, pH 7.4. Normally 5% - 8% trehalose, mannitol and 0.01% Tween 80 are added as protectants before lyophilization. Please refer to the specific buffer information in the printed manual.
<b>Reconstitution</b>	Please refer to the printed manual for detailed information.

### Data



> 90 % as determined by reducing SDS-PAGE.



Measured by its ability to block human IL-15-induced proliferation of CTLL- 2 mouse cytotoxic T cells. The ED<sub>50</sub> for this effect is 0.5-2 ng/ml.

### Background

#### For Research Use Only

Toll-free: 1-888-852-8623  
Web: [www.elabscience.com](http://www.elabscience.com)

Tel: 1-832-243-6086  
Email: [techsupport@elabscience.com](mailto:techsupport@elabscience.com)

Fax: 1-832-243-6017

Mouse interleukin-15 receptor subunit alpha, also known as Il15ra, is a high-affinity receptor for interleukin-15. Il15ra associates as a heterotrimer with the IL-2 receptor beta and gamma subunits (Common gamma chain, or gamma c) to initiate signal transduction. It can signal both in cis and trans where IL15R from one subset of cells presents IL15 to neighboring IL2RG-expressing cells. Il15ra is expressed in special cells including a wide variety of Tand B cells and non-lymphoid cells. Human Il15ra shares 45% amino acid sequence homology with the mouse form of the receptor. Eight isoforms of IL-15 R alpha mRNA have been identified, resulting from alternative splicing events involving different exons.

## For Research Use Only

Toll-free: 1-888-852-8623  
Web: [www.elabscience.com](http://www.elabscience.com)

Tel: 1-832-243-6086  
Email: [techsupport@elabscience.com](mailto:techsupport@elabscience.com)

Fax: 1-832-243-6017