

## AFP Polyclonal Antibody

catalog number: D-AB-10223L

**Note:** Centrifuge before opening to ensure complete recovery of vial contents.

### Description

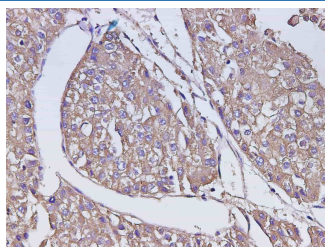
<b>Reactivity</b>	Human
<b>Immunogen</b>	Recombinant Human AEP protein expressed by E.coli
<b>Host</b>	Rabbit
<b>Isotype</b>	IgG
<b>Purification</b>	Antigen Affinity Purification
<b>Buffer</b>	PBS with 0.05% Proclin300, 1% protective protein and 50% glycerol, pH7.4

### Applications

### Recommended Dilution

IHC	1:300-1:600
-----	-------------

### Data



Immunohistochemistry of paraffin-embedded Human liver cancer using AFP Polyclonal Antibody at dilution of 1:600

### Preparation & Storage

<b>Storage</b>	Store at -20°C Valid for 12 months. Avoid freeze / thaw cycles.
<b>Shipping</b>	The product is shipped with ice pack, upon receipt, store it immediately at the temperature recommended.

### Background

Alpha-fetoprotein (AFP) is classified as a member of the albuminoid gene superfamily consisting of albumin, AFP, vitamin D (Gc) protein, and alpha-albumin. AFP is a glycoprotein of 591 amino acids and a carbohydrate moiety. AFP is one of the several embryo-specific proteins and is a dominant serum protein as early in human embryonic life as one month, when albumin and transferrin are present in relatively small amounts. It is first synthesized in the human by the yolk sac and liver (1-2 months) and subsequently predominantly in the liver. A small amount of AFP is produced by the GI tract of the human conceptus. It has been proved that AFP may reappear in the serum in elevated amounts in adult life in association with normal restorative processes and with malignant growth. Alpha-fetoprotein (AFP) is a specific marker for hepatocellular carcinoma (HCC), teratoblastomas, and neural tube defect (NTD).

### For Research Use Only

Toll-free: 1-888-852-8623  
Web: [www.elabscience.com](http://www.elabscience.com)

Tel: 1-832-243-6086  
Email: [techsupport@elabscience.com](mailto:techsupport@elabscience.com)

Fax: 1-832-243-6017

Rev. V1.9