

## Amphiphysin I Polyclonal Antibody

**catalog number: E-AB-13895**

**Note:** Centrifuge before opening to ensure complete recovery of vial contents.

### Description

<b>Reactivity</b>	Human;Mouse
<b>Immunogen</b>	Recombinant protein of human AMPH
<b>Host</b>	Rabbit
<b>Isotype</b>	IgG
<b>Purification</b>	Affinity purification
<b>Buffer</b>	Phosphate buffered solution, pH 7.4, containing 0.05% stabilizer and 50% glycerol.

### Applications

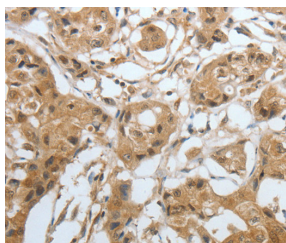
Applications	Recommended Dilution
<b>WB</b>	1:500-1:2000
<b>IHC</b>	1:50-1:200

### Data

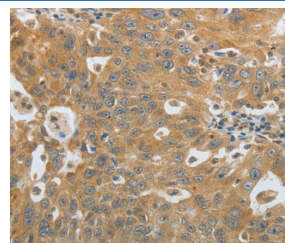


Western Blot analysis of Mouse lung tissue using Amphiphysin I Polyclonal Antibody at dilution of 1:500

**Calculated-MW:76 kDa**



Immunohistochemistry of paraffin-embedded Human lung cancer using Amphiphysin I Polyclonal Antibody at dilution of 1:30



Immunohistochemistry of paraffin-embedded Human ovarian cancer using Amphiphysin I Polyclonal Antibody at dilution of 1:30

### Preparation & Storage

<b>Storage</b>	Store at -20°C Valid for 12 months. Avoid freeze / thaw cycles.
<b>Shipping</b>	The product is shipped with ice pack, upon receipt, store it immediately at the temperature recommended.

### Background

### For Research Use Only

This gene encodes a protein associated with the cytoplasmic surface of synaptic vesicles. A subset of patients with stiff-man syndrome who were also affected by breast cancer are positive for autoantibodies against this protein. Alternate splicing of this gene results in two transcript variants encoding different isoforms. Additional splice variants have been described, but their full length sequences have not been determined. A pseudogene of this gene is found on chromosome 11.