

SMC2 Polyclonal Antibody

Catalog Number: E-AB-91943



Note: Centrifuge before opening to ensure complete recovery of vial contents.

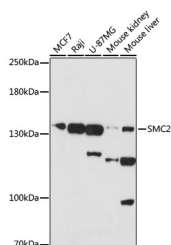
Description

Reactivity	Human, Mouse
Immunogen	Recombinant fusion protein of human SMC2
Host	Rabbit
Isotype	IgG
Purification	Affinity purification
Conjugation	Unconjugated
Formulation	PBS with 0.01% thiomersal, 50% glycerol, pH 7.3.

Applications Recommended Dilution

WB	1:500-1:2000
-----------	--------------

Data



Western blot analysis of extracts of various cells using SMC2 Polyclonal Antibody at 1:1000 dilution.

Observed MW: 135kDa

Calculated Mw: 124kDa/135kDa

Preparation & Storage

Storage Store at -20°C. Avoid freeze/thaw cycles.

Background

Central component of the condensin complex, a complex required for conversion of interphase chromatin into mitotic-like condensed chromosomes. The condensin complex probably introduces positive supercoils into relaxed DNA in the presence of type I topoisomerases and converts nicked DNA into positive knotted forms in the presence of type II topoisomerases.

For Research Use Only

A Reliable Research Partner in Life Science and Medicine

Toll-free: 1-888-852-8623

Web: www.elabscience.com

Tel: 1-832-243-6086

Email: techsupport@elabscience.com

Fax: 1-832-243-6017