

# COL4A1 Monoclonal Antibody

Catalog Number: E-AB-22150

1 Publications



**Note:** Centrifuge before opening to ensure complete recovery of vial contents.

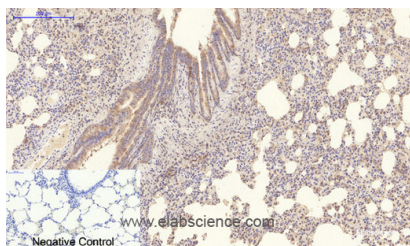
## Description

<b>Reactivity</b>	Human, Mouse, Rat
<b>Immunogen</b>	Synthetic Peptide of Collagen IV
<b>Host</b>	Mouse
<b>Isotype</b>	IgG
<b>Clone</b>	Clone: 6F6
<b>Purification</b>	Protein A purification
<b>Conjugation</b>	Unconjugated
<b>Formulation</b>	PBS with 0.02% sodium azide and 50% glycerol pH 7.4.

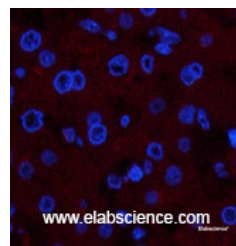
## Applications

Applications	Recommended Dilution
IHC	1:50-300
IF	1:50-1:200

## Data



Immunohistochemistry of paraffin-embedded Rat lung tissue using COL4A1 Monoclonal Antibody at dilution of 1:200.



Immunofluorescence analysis of Human liver tissue using COL4A1 Monoclonal Antibody at dilution of 1:200.

## Preparation & Storage

**Storage** Store at -20°C. Avoid freeze / thaw cycles.

## Background

This gene encodes the major type IV alpha collagen chain of basement membranes. Like the other members of the type IV collagen gene family, this gene is organized in a head-to-head conformation with another type IV collagen gene so that each gene pair shares a common promoter.

## For Research Use Only

A Reliable Research Partner in Life Science and Medicine

Toll-free: 1-888-852-8623

Web: [www.elabscience.com](http://www.elabscience.com)

Tel: 1-832-243-6086

Email: [techsupport@elabscience.com](mailto:techsupport@elabscience.com)

Fax: 1-832-243-6017