

## PSCA Polyclonal Antibody

catalog number: **E-AB-53288**

**Note:** Centrifuge before opening to ensure complete recovery of vial contents.

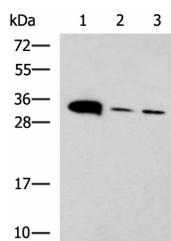
### Description

<b>Reactivity</b>	Human;Mouse
<b>Immunogen</b>	Synthetic peptide of human PSCA
<b>Host</b>	Rabbit
<b>Isotype</b>	IgG
<b>Purification</b>	Antigen affinity purification
<b>Buffer</b>	Phosphate buffered solution, pH 7.4, containing 0.05% stabilizer and 50% glycerol.

### Applications Recommended Dilution

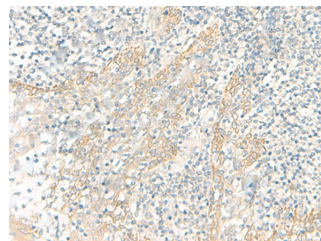
<b>WB</b>	1:500-1:2000
<b>IHC</b>	1:20-1:100

### Data



Western blot analysis of Mouse heart tissue Mouse stomach tissue and PC-3 cell lysates using PSCA Polyclonal Antibody at dilution of 1:650

**Observed-MW:Refer to figures**  
**Calculated-MW:13 kDa**



Immunohistochemistry of paraffin-embedded Human tonsil tissue using PSCA Polyclonal Antibody at dilution of 1:25(×200)

### Preparation & Storage

<b>Storage</b>	Store at -20°C Valid for 12 months. Avoid freeze / thaw cycles.
<b>Shipping</b>	The product is shipped with ice pack,upon receipt,store it immediately at the temperature recommended.

### Background

PSCA (Prostate Stem Cell antigen) is a cell surface antigen, which is overexpressed in ~40% of primary prostate cancers and in as many as 100% of metastatic ones. PSCA is also overexpressed in a majority of transitional cell and pancreatic carcinomas. Antibody directed against PSCA inhibits tumorigenesis, slows tumor growth, prolongs survival and prevents metastasis in a preclinical xenograft model indicating that PSCA may have utility as a prognostic marker and/or therapeutic target in prostate cancer.

### For Research Use Only