

## AF/LE Purified Anti-Mouse Ly6G Antibody[1A8]

Catalog Number: GF11080

**Note:** Centrifuge before opening to ensure complete recovery of vial contents.

### Description

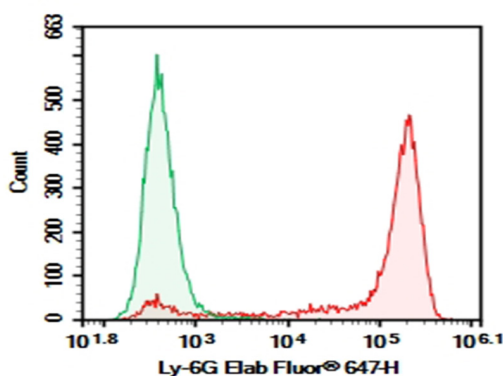
Reactivity	Mouse
Immunogen	Recombinant Mouse Ly6G protein
Host	Rat
Isotype	Rat IgG2a, $\kappa$
Clone	1A8
Purification	>98%, Protein A/G purified
Conjugation	None (AF/LE)
Buffer	Sterile PBS, pH 7.2. < 1.0 EU per mg of the antibody as determined by the LAL method.

### Applications

### Recommended Dilution

FCM	2 $\mu\text{g/mL}$ ( $0.5 \times 10^6$ - $1 \times 10^6$ cells)
-----	---

### Data



C57BL/6 Mouse bone marrow cells were stained with 0.2  $\mu\text{g}$  AF/LE Purified Anti-Mouse Ly6G Antibody[1A8] (Right) and 0.2  $\mu\text{g}$  Rat IgG2a,  $\kappa$  Isotype Control (Left), followed by Elab Fluor® 647-conjugated Goat Anti-Rat IgG Secondary Antibody.

### Preparation & Storage

Storage	Store at 4°C valid for 12 months or -20°C valid for long term storage, avoid freeze / thaw cycles. This preparation contains no preservatives, thus it should be handled under aseptic conditions.
Shipping	Ice bag

### Background

Lymphocyte antigen 6 complex, locus G (Ly-6G), a 21-25 kD GPI-anchored protein, is expressed on the majority of myeloid cells in bone marrow and peripheral granulocytes.