

# Recombinant Mouse CD6 Protein(Fc Tag)

Catalog Number: PDMM100091

**Note:** Centrifuge before opening to ensure complete recovery of vial contents.

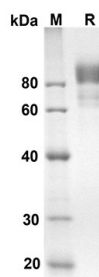
## Description

<b>Species</b>	Mouse
<b>Source</b>	Mammalian-derived Mouse Cd6 protein Gly17-Thr398, with an C-terminal Fc
<b>Mol_Mass</b>	66.9 kDa
<b>Accession</b>	Q61003
<b>Bio-activity</b>	Not validated for activity

## Properties

<b>Purity</b>	> 90% as determined by reducing SDS-PAGE.
<b>Endotoxin</b>	< 1.0 EU/mg of the protein as determined by the LAL method
<b>Storage</b>	Generally, lyophilized proteins are stable for up to 12 months when stored at -20 to -80 °C. Reconstituted protein solution can be stored at 4-8°C for 2-7 days. Aliquots of reconstituted samples are stable at < -20°C for 3 months.
<b>Shipping</b>	This product is provided as lyophilized powder which is shipped with ice packs.
<b>Formulation</b>	Lyophilized from a 0.2 µm filtered solution in PBS with 5% Trehalose and 5% Mannitol.
<b>Reconstitution</b>	It is recommended that sterile water be added to the vial to prepare a stock solution of 0.5 mg/mL. Concentration is measured by UV-Vis.

## Data



SDS-PAGE analysis of Mouse Cd6 proteins, 2 µg/lane of Recombinant Mouse Cd6 proteins was resolved with an SDS-PAGE under reducing conditions, showing bands at 66.9KD

## Background

## For Research Use Only

# Recombinant Mouse CD6 Protein(Fc Tag)

Catalog Number: PDMM100091



T-cell differentiation antigen CD6, also known as TP12 and CD6, is a single-pass type I membrane protein which contains three SRCR domains. CD6 / TP12 is a cell surface glycoprotein expressed primarily on T cells, it may function as a costimulatory molecule and may play a role in autoreactive immune responses. CD6 / TP12 is expressed by thymocytes, mature T-cells, a subset of B-cells known as B-1 cells, and by some cells in the brain. CD6 ligand termed CD166 (previously known as activated leukocyte cell adhesion molecule, ALCAM) has been identified and shown to be expressed on activated T cells, B cells, thymic epithelium, keratinocytes, and in rheumatoid arthritis synovial tissue. CD6 / TP12 binds to activated leukocyte cell adhesion molecule (CD166), and is considered as a costimulatory molecule involved in lymphocyte activation and thymocyte development. CD6 / TP12 partially associates with the TCR / CD3 complex and colocalizes with it at the center of the mature immunological synapse (IS) on T lymphocytes. During thymic development CD6-dependent signals may contribute both to thymocyte survival, and to the overall functional avidity of selection in both man and Mouse.

## For Research Use Only

A Reliable Research Partner in Life Science and Medicine  
Tel: 400-999-2100

Email: [techsupport@elabscience.cn](mailto:techsupport@elabscience.cn)

Web: [www.elabscience.cn](http://www.elabscience.cn)

Rev. V1.5