

## Cyclin B1 Polyclonal Antibody

**catalog number: E-AB-70114**

**Note:** Centrifuge before opening to ensure complete recovery of vial contents.

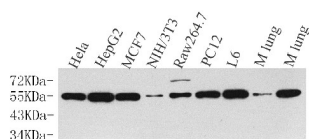
### Description

<b>Reactivity</b>	Human;Mouse;Rat
<b>Immunogen</b>	KLH conjugated Synthetic peptide corresponding to Mouse Cyclin B1
<b>Host</b>	Rabbit
<b>Isotype</b>	IgG
<b>Purification</b>	Affinity purification
<b>Buffer</b>	Phosphate buffered solution, pH 7.4, containing 0.05% stabilizer, 1% protein protectant and 50% glycerol.

### Applications

Applications	Recommended Dilution
<b>WB</b>	1:500-1:2000
<b>IHC</b>	1:300-1:500
<b>IF</b>	1:100-1:300

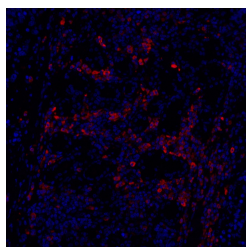
### Data



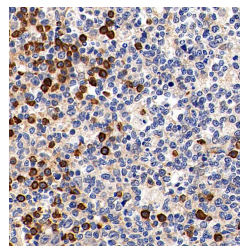
Western Blot analysis of various samples using Cyclin B1 Polyclonal Antibody at dilution of 1:500.

**Observed-MW:55 kDa**

**Calculated-MW:55 kDa**



Immunofluorescence analysis of paraffin-embedded Human lung cancer using Cyclin B1 Polyclonal Antibody at dilution of 1:100.



Immunohistochemistry analysis of paraffin-embedded Human tonsil using Cyclin B1 Polyclonal Antibody at dilution of 1:300.

### Preparation & Storage

<b>Storage</b>	Store at -20°C Valid for 12 months. Avoid freeze / thaw cycles.
<b>Shipping</b>	The product is shipped with ice pack, upon receipt, store it immediately at the temperature recommended.

### Background

### For Research Use Only

G2/mitotic-specific cyclin-B1 is a protein that in humans is encoded by the CCNB1 gene. The protein encoded by this gene is a regulatory protein involved in mitosis. The gene product complexes with p34(cdc2) to form the maturation-promoting factor (MPF). Two alternative transcripts have been found, a constitutively expressed transcript and a cell cycle-regulated transcript, that is expressed predominantly during G2/M phase. The different transcripts result from the use of alternate transcription initiation sites.

## For Research Use Only

Toll-free: 1-888-852-8623  
Web: [www.elabscience.com](http://www.elabscience.com)

Tel: 1-832-243-6086  
Email: [techsupport@elabscience.com](mailto:techsupport@elabscience.com)

Fax: 1-832-243-6017

Rev. V1.7