

Recombinant Human CSNK2A1/CK2A1 Protein (GST Tag)



Catalog Number:PKSH030405

Note: Centrifuge before opening to ensure complete recovery of vial contents.

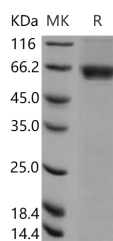
Description

| | |
|------------------------------------|---|
| Synonyms | CK2A1;CKII;CSNK2A3 |
| Species | Human |
| Expression Host | Baculovirus-Insect Cells |
| Sequence | Met 1-Gln 391 |
| Accession | NP_808227.1 |
| Calculated Molecular Weight | 71.4 kDa |
| Observed molecular weight | 65 kDa |
| Tag | N-GST |
| Bioactivity | The specific activity was determined to be 9 nmol/min/mg using casein as substrate. |

Properties

| | |
|-----------------------|---|
| Purity | > 93 % as determined by reducing SDS-PAGE. |
| Endotoxin | < 1.0 EU per µg of the protein as determined by the LAL method. |
| Storage | Store at < -20°C, stable for 6 months. Please minimize freeze-thaw cycles. |
| Shipping | This product is provided as liquid. It is shipped at frozen temperature with blue ice/gel packs. Upon receipt, store it immediately at < -20°C. |
| Formulation | Supplied as sterile solution of 50mM Tris, 100mM NaCl, 0.5mM PMSF, 0.5mM GSH, pH 8.0 |
| Reconstitution | Not Applicable |

Data



> 93 % as determined by reducing SDS-PAGE.

Background

Casein kinase II subunit alpha, also known as CK II alpha, CSNK2A1 and CK2A1, is a member of the protein kinase superfamily, Ser / Thr protein kinase family and CK2 subfamily. Casein kinase II (CSNK2A1) is a serine / threonine protein kinase that phosphorylates acidic proteins such as casein. This kinase is composed of an alpha, an alpha-prime, and two beta subunits. The alpha subunits contain the catalytic activity while the beta subunits undergo autophosphorylation. Casein kinase II (CSNK2A1) is a constitutively active, ubiquitously expressed serine / threonine protein kinase that is thought to have a regulatory function in cell proliferation, cell differentiation and apoptosis. CSNK2A1 functions as a tetrameric complex consisting of two regulatory beta-subunits and two catalytic units (alpha and alpha') in a homomeric or heteromeric conformation. Whilst the alpha- and alpha'-subunits are catalytically identical, proteins that regulate CSNK2A1, such as cdc2 and Hsp90, preferentially bind to the alpha and not the alpha'-subunit. CSNK2A1 can phosphorylate a number of key intracellular signaling proteins implicated in tumor suppression (p53 and

For Research Use Only

A Reliable Research Partner in Life Science and Medicine

Toll-free: 1-888-852-8623

Web: www.elabscience.com

Tel: 1-832-243-6086

Email: techsupport@elabscience.com

Fax: 1-832-243-6017

Recombinant Human CSNK2A1/CK2A1 Protein (GST Tag)



Catalog Number: PKSH030405

PTEN) and tumorigenesis (myc, jun, NF-kappaB). CSNK2A1 is also thought to influence Wnt signaling via beta-catenin phosphorylation and the PI 3-K signaling pathway via the phosphorylation of Akt.

For Research Use Only

A Reliable Research Partner in Life Science and Medicine

Toll-free: 1-888-852-8623

Web: www.elabscience.com

Tel: 1-832-243-6086

Email: techsupport@elabscience.com

Fax: 1-832-243-6017