

# THNSL1 Polyclonal Antibody

catalog number: E-AB-52858

**Note:** Centrifuge before opening to ensure complete recovery of vial contents.

## Description

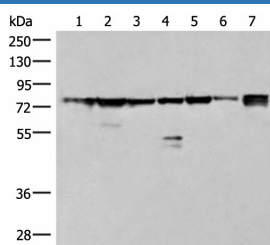
<b>Reactivity</b>	Human;Mouse
<b>Immunogen</b>	Fusion protein of human THNSL1
<b>Host</b>	Rabbit
<b>Isotype</b>	IgG
<b>Purification</b>	Antigen affinity purification
<b>Conjugation</b>	Unconjugated
<b>buffer</b>	Phosphate buffered solution, pH 7.4, containing 0.05% stabilizer and 50% glycerol.

## Applications

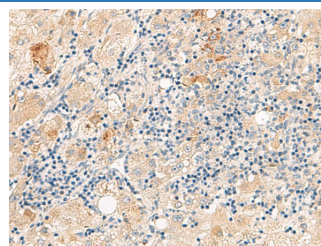
## Recommended Dilution

<b>WB</b>	1:500-1:2000
<b>IHC</b>	1:50-1:300

## Data



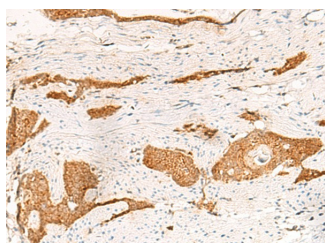
Western blot analysis of 231 K562 TM4 cell Mouse kidney tissue Mouse liver tissue Mouse brain tissue Hela cell lysates using THNSL1 Polyclonal Antibody at dilution of 1:500



Immunohistochemistry of paraffin-embedded Human liver cancer tissue using THNSL1 Polyclonal Antibody at dilution of 1:70( $\times 200$ )

**Observed-MV: Refer to figures**

**Calculated-MV: 83 kDa**



Immunohistochemistry of paraffin-embedded Human esophagus cancer tissue using THNSL1 Polyclonal Antibody at dilution of 1:70( $\times 200$ )

## Preparation & Storage

<b>Storage</b>	Store at $-20^{\circ}\text{C}$ Valid for 12 months. Avoid freeze / thaw cycles.
<b>Shipping</b>	The product is shipped with ice pack, upon receipt, store it immediately at the temperature recommended.

## Background

## For Research Use Only

# THNSL1 Polyclonal Antibody

catalog number: E-AB-52858



THNSL1 (threonine synthase-like 1), also known as TSH1, is a 743 amino acid member of the serine/threonine dehydratase family. Expressed primarily in brain and endocrine glands, THNSL1 is thought to function as a pyridoxal-5'-phosphate (PLP)-dependent enzyme that uses pyridoxal phosphate as a cofactor. THNSL1 shares similarity with bacterial threonine synthases (which synthesize threonine from aspartic acid), suggesting that THNSL1 may have once participated in de novo threonine synthesis within the body, but has since lost its original metabolic role.

## For Research Use Only

A Reliable Research Partner in Life Science and Medicine  
Tel: 400-999-2100

Email: [techsupport@elabscience.cn](mailto:techsupport@elabscience.cn)

Web: [www.elabscience.cn](http://www.elabscience.cn)

Rev. V1.7