

# Recombinant Human Somatoliberin/GHRH Protein (Fc Tag)

Catalog Number: PKSH032514



**Note:** Centrifuge before opening to ensure complete recovery of vial contents.

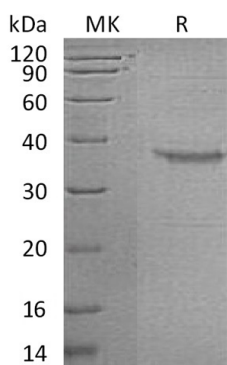
## Description

|                     |                            |
|---------------------|----------------------------|
| <b>Species</b>      | Human                      |
| <b>Mol_Mass</b>     | 33.4 kDa                   |
| <b>Accession</b>    | P01286                     |
| <b>Bio-activity</b> | Not validated for activity |

## Properties

|                       |  |
|-----------------------|--|
| <b>Purity</b>         | > 95 % as determined by reducing SDS-PAGE.   |
| <b>Endotoxin</b>      | < 1.0 EU per µg of the protein as determined by the LAL method.  |
| <b>Storage</b>        | Generally, lyophilized proteins are stable for up to 12 months when stored at -20 to -80 °C. Reconstituted protein solution can be stored at 4-8°C for 2-7 days. Aliquots of reconstituted samples are stable at < -20°C for 3 months.           |
| <b>Shipping</b>       | This product is provided as lyophilized powder which is shipped with ice packs.  |
| <b>Formulation</b>    | Lyophilized from a 0.2 µm filtered solution of PBS, pH 7.4.<br>Normally 5% - 8% trehalose, mannitol and 0.01% Tween 80 are added as protectants before lyophilization.<br>Please refer to the specific buffer information in the printed manual. |
| <b>Reconstitution</b> | Please refer to the printed manual for detailed information.   |

## Data



> 95 % as determined by reducing SDS-PAGE.

## Background

Growth-hormone-releasing hormone (GHRH) is a releasing hormone for growth hormone. It is a 44-amino acid peptide hormone produced in the arcuate nucleus of the hypothalamus. GHRH first appears in the human hypothalamus between 18 and 29 weeks of gestation, which corresponds to the start of production of growth hormone and other somatotropes in fetuses. GRF is released by the hypothalamus and acts on the adenohypophyse to stimulate the secretion of growth hormone.

## For Research Use Only