

# CHRNA5 Polyclonal Antibody

Catalog Number: E-AB-53456



**Note:** Centrifuge before opening to ensure complete recovery of vial contents.

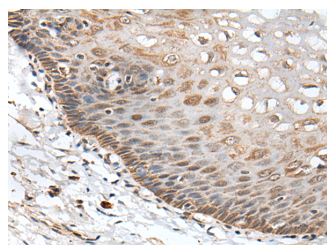
## Description

|                     |   |
|---------------------|---|
| <b>Reactivity</b>   | Human, Rat  |
| <b>Immunogen</b>    | Synthetic peptide of human CHRNA5                       |
| <b>Host</b>         | Rabbit  |
| <b>Isotype</b>      | IgG   |
| <b>Purification</b> | Antigen affinity purification                           |
| <b>Conjugation</b>  | Unconjugated  |
| <b>Formulation</b>  | PBS with 0.05% NaN <sub>3</sub> and 40% Glycerol, pH7.4 |

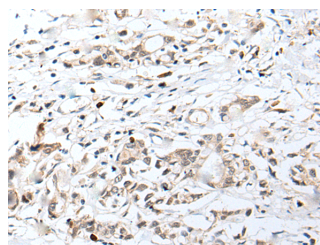
## Applications Recommended Dilution

|              |                |
|--------------|----------------|
| <b>IHC</b>   | 1:40-1:250     |
| <b>ELISA</b> | 1:5000-1:10000 |

## Data



Immunohistochemistry of paraffin-embedded Human esophagus cancer tissue using CHRNA5 Polyclonal Antibody at dilution of 1:50 (x200)



Immunohistochemistry of paraffin-embedded Human gastric cancer tissue using CHRNA5 Polyclonal Antibody at dilution of 1:50 (x200)

## Preparation & Storage

**Storage** Store at -20°C. Avoid freeze / thaw cycles.

## Background

The protein encoded by this gene is a nicotinic acetylcholine receptor subunit and a member of a superfamily of ligand-gated ion channels that mediate fast signal transmission at synapses. These receptors are thought to be heteropentamers composed of separate but similar subunits. Defects in this gene have been linked to susceptibility to lung cancer type 2 (LNCR2). [provided by RefSeq, Jun 2010]

## For Research Use Only

A Reliable Research Partner in Life Science and Medicine

Toll-free: 1-888-852-8623

Web: [www.elabscience.com](http://www.elabscience.com)

Tel: 1-832-243-6086

Email: [techsupport@elabscience.com](mailto:techsupport@elabscience.com)

Fax: 1-832-243-6017