

FHIT Polyclonal Antibody

Catalog Number: E-AB-15035



Note: Centrifuge before opening to ensure complete recovery of vial contents.

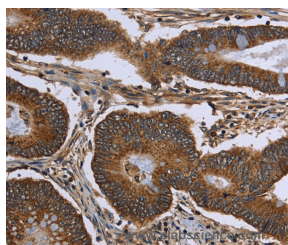
Description

| | |
|---------------------|---|
| Reactivity | Human, Mouse, Rat |
| Immunogen | Recombinant protein of human FHIT |
| Host | Rabbit |
| Isotype | IgG |
| Purification | Affinity purification |
| Conjugation | Unconjugated |
| Formulation | PBS with 0.05% sodium azide and 50% glycerol, PH7.4 |

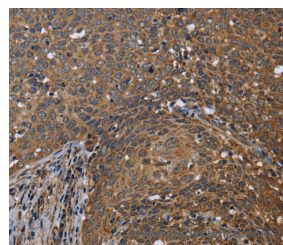
Applications Recommended Dilution

| | |
|------------|------------|
| IHC | 1:50-1:200 |
|------------|------------|

Data



Immunohistochemistry of paraffin-embedded Human colon cancer tissue using FHIT Polyclonal Antibody at dilution 1:30



Immunohistochemistry of paraffin-embedded Human cervical cancer tissue using FHIT Polyclonal Antibody at dilution 1:30

Preparation & Storage

Storage Store at -20°C. Avoid freeze / thaw cycles.

Background

This gene, a member of the histidine triad gene family, encodes a diadenosine 5',5'''-P1,P3-triphosphate hydrolase involved in purine metabolism. The gene encompasses the common fragile site FRA3B on chromosome 3, where carcinogen-induced damage can lead to translocations and aberrant transcripts of this gene. In fact, aberrant transcripts from this gene have been found in about half of all esophageal, stomach, and colon carcinomas. Alternatively spliced transcript variants have been found for this gene.

For Research Use Only

A Reliable Research Partner in Life Science and Medicine

Toll-free: 1-888-852-8623

Web: www.elabscience.com

Tel: 1-832-243-6086

Email: techsupport@elabscience.com

Fax: 1-832-243-6017