

PARP4 Polyclonal Antibody

Catalog Number: E-AB-91627

Note: Centrifuge before opening to ensure complete recovery of vial contents.

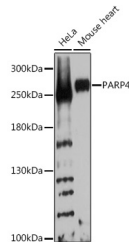
Description

Reactivity	Human, Mouse, Rat
Immunogen	Recombinant fusion protein of human PARP4
Host	Rabbit
Isotype	IgG
Purification	Affinity purification
Conjugation	Unconjugated
Formulation	PBS with 0.02% sodium azide, 50% glycerol, pH7.3.

Applications Recommended Dilution

WB	1:500-1:2000
-----------	--------------

Data



Western blot analysis of extracts of various cell lines using PARP4 Polyclonal Antibody at 1:1000 dilution.

Observed MW: 250kDa
Calculated Mw: 192kDa

Preparation & Storage

Storage Store at -20°C. Avoid freeze/thaw cycles.

Background

This gene encodes poly(ADP-ribose)transferase-like 1 protein, which is capable of catalyzing a poly(ADP-ribose)ation reaction. This protein has a catalytic domain which is homologous to that of poly(ADP-ribose) transferase, but lacks an N-terminal DNA binding domain which activates the C-terminal catalytic domain of poly(ADP-ribose) transferase. Since this protein is not capable of binding DNA directly, its transferase activity may be activated by other factors such as protein-protein interaction mediated by the extensive carboxyl terminus.

For Research Use Only

A Reliable Research Partner in Life Science and Medicine

Toll-free: 1-888-852-8623

Web: www.elabscience.com

Tel: 1-832-243-6086

Email: techsupport@elabscience.com

Fax: 1-832-243-6017