

## Purified Anti-Human CD172a/b Antibody[SE5A5]

catalog number: **AN003170P**

**Note:** Centrifuge before opening to ensure complete recovery of vial contents.

### Description

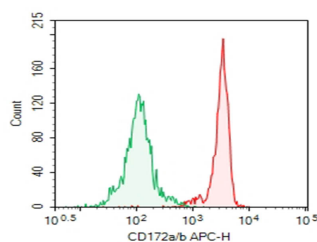
<b>Reactivity</b>	Human
<b>Immunogen</b>	Recombinant Human CD172a/b protein
<b>Host</b>	Mouse
<b>Isotype</b>	Mouse IgG1, $\kappa$
<b>Clone</b>	SE5A5
<b>Purification</b>	>98%, Protein A/G purified
<b>Buffer</b>	Phosphate-buffered solution, pH 7.2, containing 0.05% non-protein stabilizer. Dialyze to completely remove the stabilizer prior to labeling.

### Applications

### Recommended Dilution

<b>FCM</b>	2 $\mu\text{g}/\text{mL}$ ( $0.5 \times 10^6$ - $1 \times 10^6$ cells)
------------	--

### Data



Human peripheral blood Granulocytes were stained with 0.2  $\mu\text{g}$  Purified Anti-Human CD172a/b Antibody[SE5A5] (Right) and 0.2  $\mu\text{g}$  Mouse IgG1,  $\kappa$  Isotype Control (Left), followed by APC-conjugated Goat Anti-Mouse IgG Secondary Antibody.

### Preparation & Storage

<b>Storage</b>	Store at 4°C valid for 12 months or -20°C valid for long term storage, avoid freeze / thaw cycles.
<b>Shipping</b>	Ice bag

### Background

CD172a, also known as signal-regulatory protein  $\alpha$  (SIRP $\alpha$ ), src homology 2 domain-containing phosphatase substrate-1 (SHPS1), PTPNS1, BIT, MFR, and P84, is a 75-110 kD transmembrane glycoprotein involved in receptor tyrosine kinase coupled signaling pathway. It belongs to the Ig superfamily and is primarily expressed on monocytes/macrophages, granulocytes, dendritic cells, and neurons. CD172a serves as a substrate of activated receptor tyrosine kinases (RTKs). The interaction of CD172a intracellular domain with SHP-1 and SHP-2 displays negative signaling in the regulation of leukocyte adhesion and transmigration, T cell activation, macrophage fusion, and phagocytosis. CD47 (IAP) is the extracellular ligand for CD172a. SIRP $\alpha$  was recently demonstrated to be a specific marker for cardiomyocytes derived from human pluripotent stem cells<sup>2</sup>.

### For Research Use Only