

Elab Fluor® 488 Anti-Human CD62L Antibody[DREG56]

Catalog Number: E-AB-F1051L

Note: Centrifuge before opening to ensure complete recovery of vial contents.

Description

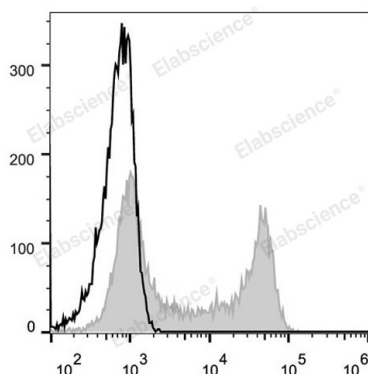
Reactivity	Human
Host	Mouse
Isotype	Mouse IgG1, κ
Clone No.	DREG56
Isotype Control	Elab Fluor® 488 Mouse IgG1, κ Isotype Control[MOPC-21] [Product E-AB-F09792L]
Conjugation	Elab Fluor® 488
Conjugation Information	Elab Fluor® 488 is designed to be excited by the Blue laser (488 nm) and detected using an optical filter centered near 520 nm (e.g., a 525/40 nm bandpass filter).
Storage Buffer	Phosphate buffered solution, pH 7.2, containing 0.09% stabilizer and 1% protein protectant.

Applications

Recommended usage

FCM	Each lot of this antibody is quality control tested by flow cytometric analysis. The amount of the reagent is suggested to be used 5 µL of antibody per test (million cells in 100 µL staining volume or per 100 µL of whole blood). Please check your vial before the experiment. Since applications vary, the appropriate dilutions must be determined for individual use.
------------	---

Data



Human peripheral blood lymphocytes are stained with Elab

Fluor® 488 Anti-Human CD62L Antibody (filled gray histogram). Unstained lymphocytes (empty black histogram) are used as control.

Preparation & Storage

Storage	Keep as concentrated solution. This product can be stored at 2-8°C for 12 months. Please protected from prolonged exposure to light and do not freeze.
Shipping	Ice bag

Antigen Information

Alternate Names	CD62L;CD62 antigen-like family member L;L-selectin;LAM-1;LECAM1;Lnhr;Ly-22;Ly22; Lymph node homing receptor;Sell
Uniprot ID	P14151

For Research Use Only

Toll-free: 1-888-852-8623
Web: www.elabscience.com

Tel: 1-832-243-6086
Email: techsupport@elabscience.com

Fax: 1-832-243-6017

Rev. V1.7

Gene ID

6402

Background

CD62L is a 74-95 kD single chain type I glycoprotein referred to as L-selectin or LECA M-1. It is expressed on most peripheral blood B cells, subsets of T and NK cells, monocytes, granulocytes, and certain hematopoietic malignant cells. CD62L binds to carbohydrates present on certain glycoforms of CD34, glycamin-1, and MAdCAM-1 and with a low affinity to anionic oligosaccharide sequences related to sialylated Lewis X (sLex, CD15s) through its C-type lectin domain. CD62L is important for the homing of naïve lymphocytes to high endothelial venules in peripheral lymph nodes and Peyer's patches. It also plays a role in leukocyte rolling on activated endothelial cells.