

# Oct-1/2 Monoclonal Antibody

Catalog Number:E-AB-22047



**Note:** Centrifuge before opening to ensure complete recovery of vial contents.

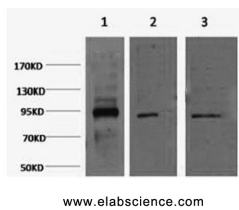
## Description

<b>Reactivity</b>	Human
<b>Immunogen</b>	Synthetic Peptide
<b>Host</b>	Mouse
<b>Isotype</b>	IgG
<b>Clone</b>	Clone:5G3
<b>Purification</b>	Protein A purification
<b>Conjugation</b>	Unconjugated
<b>Formulation</b>	PBS with 0.02% sodium azide and 50% glycerol pH 7.4.

## Applications Recommended Dilution

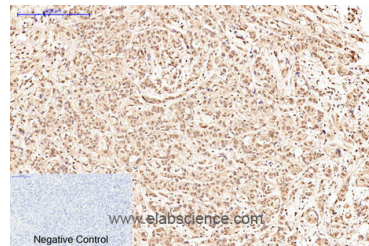
<b>WB</b>	1:500-2000
<b>IHC</b>	1:50-300
<b>IF</b>	1:100-1:300

## Data

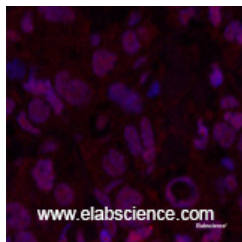


Western Blot analysis of 1) HeLa, 2) Jurkat, 3) HepG2 cells using Oct-1/2 Monoclonal Antibody at dilution of 1:2000.

**Observed Mw:89kDa**  
**Calculated Mw:76kDa**



Immunohistochemistry of paraffin-embedded Human breast cancer tissue using Oct-1/2 Monoclonal Antibody at dilution of 1:200.



Immunofluorescence analysis of Human breast cancer tissue using Oct-1/2 Monoclonal Antibody at dilution of 1:200.

## Preparation & Storage

**Storage** Store at -20°C. Avoid freeze / thaw cycles.

## For Research Use Only

A Reliable Research Partner in Life Science and Medicine

Toll-free: 1-888-852-8623

Tel: 1-832-243-6086

Fax: 1-832-243-6017

Web: [www.elabscience.com](http://www.elabscience.com)

Email: [techsupport@elabscience.com](mailto:techsupport@elabscience.com)

# Oct-1/2 Monoclonal Antibody

Catalog Number: E-AB-22047



## Background

The OCT1 transcription factor was among the first identified members of the POU transcription factor family. Members of this family contain the POU domain, a 160-amino acid region necessary for DNA binding to the octameric sequence ATGCAAAT.

---

## For Research Use Only

A Reliable Research Partner in Life Science and Medicine

Toll-free: 1-888-852-8623

Tel: 1-832-243-6086

Fax: 1-832-243-6017

Web: [www.elabscience.com](http://www.elabscience.com)

Email: [techsupport@elabscience.com](mailto:techsupport@elabscience.com)