

Vimentin Polyclonal Antibody

Catalog Number: E-AB-36172



Note: Centrifuge before opening to ensure complete recovery of vial contents.

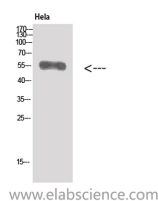
Description

| | |
|---------------------|---|
| Reactivity | Human, Mouse, Rat |
| Immunogen | Synthesized peptide derived from Vimentin |
| Host | Rabbit |
| Isotype | IgG |
| Purification | Affinity purification |
| Formulation | PBS with 0.02% sodium azide, 0.5% protective protein and 50% glycerol pH 7.4. |

Applications Recommended Dilution

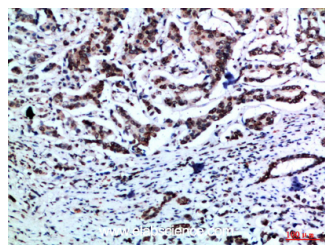
| | |
|--------------|---------------|
| WB | 1:500-2000 |
| ELISA | 1:10000-20000 |

Data

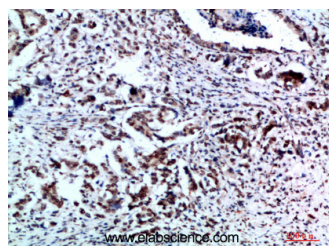


Western Blot analysis of HeLa cells using Vimentin Polyclonal Antibody at dilution of 1:500.

Observed Mw: 55kDa
Calculated Mw: 54kDa



Immunohistochemistry of paraffin-embedded Human breast cancer tissue using Vimentin Polyclonal Antibody at dilution of 1:200.



Immunohistochemistry of paraffin-embedded Human breast cancer tissue using Vimentin Polyclonal Antibody at dilution of 1:200.

Preparation & Storage

Storage Store at -20°C. Avoid freeze / thaw cycles.

Background

Vimentins are class-III intermediate filaments found in various non-epithelial cells, especially mesenchymal cells. Vimentin is attached to the nucleus, endoplasmic reticulum, and mitochondria, either laterally or terminally.

For Research Use Only

A Reliable Research Partner in Life Science and Medicine

Toll-free: 1-888-852-8623

Web: www.elabscience.com

Tel: 1-832-243-6086

Email: techsupport@elabscience.com

Fax: 1-832-243-6017