

# Recombinant Human MPZL1 Protein (His Tag)

Catalog Number: PKSH032771



**Note:** Centrifuge before opening to ensure complete recovery of vial contents.

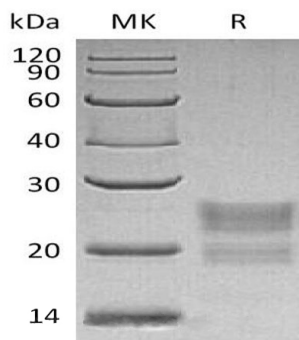
## Description

<b>Species</b>	Human
<b>Mol_Mass</b>	15.2 kDa
<b>Accession</b>	O95297
<b>Bio-activity</b>	Not validated for activity

## Properties

<b>Purity</b>	> 95 % as determined by reducing SDS-PAGE.
<b>Endotoxin</b>	< 1.0 EU per µg of the protein as determined by the LAL method.
<b>Storage</b>	Generally, lyophilized proteins are stable for up to 12 months when stored at -20 to -80 °C. Reconstituted protein solution can be stored at 4-8°C for 2-7 days. Aliquots of reconstituted samples are stable at < -20°C for 3 months.
<b>Shipping</b>	This product is provided as lyophilized powder which is shipped with ice packs.
<b>Formulation</b>	Lyophilized from a 0.2 µm filtered solution of 20mM PB, 150mM NaCl, pH 7.4. Normally 5% - 8% trehalose, mannitol and 0.01% Tween 80 are added as protectants before lyophilization.
	Please refer to the specific buffer information in the printed manual.
<b>Reconstitution</b>	Please refer to the printed manual for detailed information.

## Data



> 95 % as determined by reducing SDS-PAGE.

## Background

Myelin protein zero-like protein 1 (MPZL1) is encoded by the MPZL1 gene, which is a single-pass type I membrane protein. It is widely expressed with highest levels in heart, placenta, kidney and pancreas. As cell surface receptor, it involved in signal transduction processes. MPZL1 recruits PTPN11/SHP-2 to the cell membrane and subsequently activate/phosphorylate Src kinase at Tyr426, promoting phosphorylation of cortactin and migration of HCC cells. MPZL1 also is a major receptor for concanavalin-A (ConA) and involved in cellular signaling induced by ConA, which probably includes Src family tyrosine-protein kinases.

## For Research Use Only