

## Recombinant PLAG1 Monoclonal Antibody

**catalog number: AN301944L**

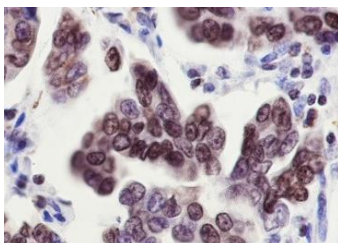
**Note:** Centrifuge before opening to ensure complete recovery of vial contents.

### Description

<b>Reactivity</b>	Human;Rat;Mouse
<b>Immunogen</b>	Recombinant human PLAG1 fragment
<b>Host</b>	Rabbit
<b>Isotype</b>	IgG, κ
<b>Clone</b>	A660
<b>Purification</b>	Protein A purified
<b>Buffer</b>	PBS, 50% glycerol, 0.05% Proclin 300, 0.05% protein protectant.

### Applications Recommended Dilution

<b>WB</b>	1:5000-1:10000
<b>IHC</b>	1:50



Immunohistochemistry of paraffin-embedded Human ovarian tumor using PLAG1 Monoclonal Antibody at dilution of 1:50.

### Preparation & Storage

<b>Storage</b>	Store at -20°C Valid for 12 months. Avoid freeze / thaw cycles.
<b>Shipping</b>	Ice bag

### Background

Pleiomorphic adenoma gene 1 protein (PLAG1) is a transcription factor whose activation results in up-regulation of target genes, such as IGFII, leading to uncontrolled cell proliferation. When PLAG1 overexpression in cultured cells, higher proliferation rate and transformation are observed. Other target genes such as CRLF1, CRABP2, CRIP2, PIGF are strongly induced in cells with PLAG1 induction. PLAG1 ectopic expression can trigger the development of pleomorphic adenomas of the salivary gland and lipoblastomas. PLAG1 overexpression is associated with up-regulation of IGFII, is frequently observed in hepatoblastoma, common primary liver tumor in childhood. PLAG1 cooperates with CBFB-MYH11, a fusion gene important for myeloid leukemia.

### For Research Use Only

Toll-free: 1-888-852-8623  
Web: [www.elabscience.com](http://www.elabscience.com)

Tel: 1-832-243-6086  
Email: [techsupport@elabscience.com](mailto:techsupport@elabscience.com)

Fax: 1-832-243-6017

Rev. V1.0