

Recombinant ISG15 Monoclonal Antibody

catalog number: **AN300127P**

Note: Centrifuge before opening to ensure complete recovery of vial contents.

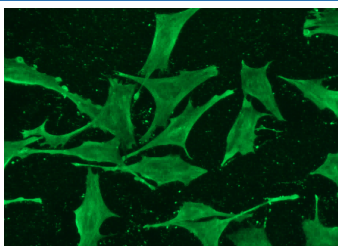
Description

Reactivity	Human
Immunogen	Recombinant Human ISG15 protein
Host	Rabbit
Isotype	IgG
Clone	5D9
Purification	Protein A
Buffer	0.2 µm filtered solution in PBS

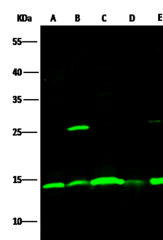
Applications

Applications	Recommended Dilution
WB	1:2000-1:10000
ICC/IF	1:20-1:100

Data



Immunofluorescence analysis of Human ProISG15 in HeLa cells. Cells were fixed with 4% PFA, permeabilized with 0.3% Triton X-100 in PBS, blocked with 10% serum, and incubated with rabbit anti-Human ProISG15 Monoclonal Antibody (1:60) at 37°C 1 hour. Then cells were stained with the Alexa Fluor® 488-conjugated Goat Anti-rabbit IgG secondary antibody (green). Positive staining was localized to cytoplasm.



Western Blot with ISG15 Monoclonal Antibody at dilution of 1:5000. Lane A: HeLa Whole Cell Lysate, Lane B: 293 Whole Cell Lysate, Lane C: Daudi Whole Cell Lysate, Lysates/proteins at 30 µg per lane.

Observed-MW:15 kDa
Calculated-MW:18 kDa

Preparation & Storage

Storage	This antibody can be stored at 2°C-8°C for one month without detectable loss of activity. Antibody products are stable for twelve months from date of receipt when stored at -20°C to -80°C. Preservative-Free. Avoid repeated freeze-thaw cycles.
Shipping	Ice bag

Background

ISG15 (interferon-induced 15 kDa protein; also known as IP17) is a 15 kDa ubiquitin family protein that is expressed by a wide variety of cell types. ISG15 is induced by type-I IFN, and like ubiquitin, becomes conjugated to intracellular proteins. Unlike ubiquitin, it does not target proteins for degradation. Instead, it is part of the antiviral response. Human proISG15 is 165 amino acids (aa) in length. There are two ubiquitin-like domains (aa 2-78 and 79-157) and a propeptide (aa 158-165) that is cleaved intracellularly. Select blood mononuclear cells secrete mature ISG15, which is chemotactic for neutrophils. Mature human ISG15 is 66% aa identical to mouse ISG15.

For Research Use Only