

## LRPAP1/A2MRAP Monoclonal Antibody

catalog number: **AN200116P**

**Note:** Centrifuge before opening to ensure complete recovery of vial contents.

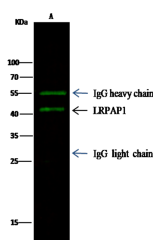
### Description

<b>Reactivity</b>	Human
<b>Immunogen</b>	Recombinant Human LRPAP1 protein
<b>Host</b>	Mouse
<b>Isotype</b>	IgG1
<b>Clone</b>	8A5
<b>Purification</b>	Protein A
<b>Buffer</b>	0.2 µm filtered solution in PBS

### Applications

### Recommended Dilution

<b>WB</b>	1:500-1:1000
<b>IHC-P</b>	1:500-1:2000
<b>IP</b>	1-2 µL/mg of lysate



Immunoprecipitation analysis using 0.5 µL anti-LRPAP1 mouse Monoclonal Antibody and 15 µl of 50 % Protein G agarose. Western blot was performed from the immunoprecipitate using LRPAP1 mouse Monoclonal Antibody at a dilution of 1:1000. Lane A: 0.5 mg 293T Whole Cell Lysate

**Observed-MW: 41 kDa**

**Calculated-MW: 41 kDa**

### Preparation & Storage

<b>Storage</b>	This antibody can be stored at 2°C-8°C for one month without detectable loss of activity. Antibody products are stable for twelve months from date of receipt when stored at -20°C to -80°C. Preservative-Free. Avoid repeated freeze-thaw cycles.
<b>Shipping</b>	Ice bag

### Background

This gene encodes a protein that interacts with the low density lipoprotein (LDL) receptor-related protein and facilitates its proper folding and localization by preventing the binding of ligands. Mutations in this gene have been identified in individuals with myopia 20. Alternative splicing results in multiple transcript variants.

### For Research Use Only