

Recombinant MAG Monoclonal Antibody

catalog number: **AN301593L**

Note: Centrifuge before opening to ensure complete recovery of vial contents.

Description

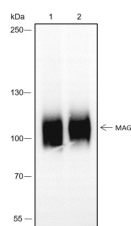
Reactivity	Human;Rat;Mouse
Immunogen	Recombinant human MAG fragment
Host	Rabbit
Isotype	IgG, κ
Clone	A292
Purification	Protein A purified
Buffer	PBS, 50% glycerol, 0.05% Proclin 300, 0.05% protein protectant.

Applications

Recommended Dilution

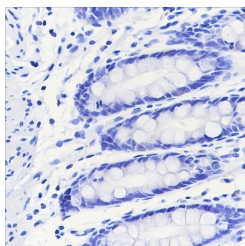
WB	1:500-1:2000
IHC	1:50-1:100

Data

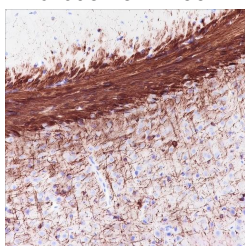


Western Blot with MAG Monoclonal Antibody at dilution of 1:2000. Lane 1: Mouse cerebellum, Lane 2: Rat cerebellum

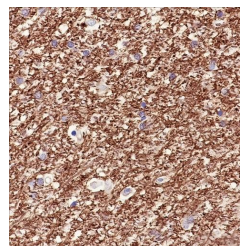
Observed-MW:100 kDa
Calculated-MW:69 kDa



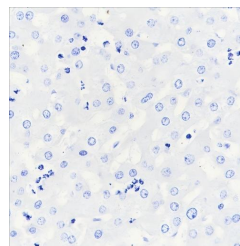
Immunohistochemistry of paraffin-embedded Human colon(Negative tissue) using MAG Monoclonal Antibody at dilution of 1:100.



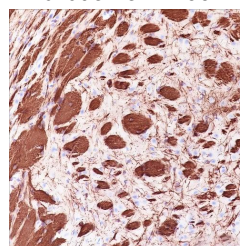
Immunohistochemistry of paraffin-embedded Rat hippocampus using MAG Monoclonal Antibody at dilution of 1:100.



Immunohistochemistry of paraffin-embedded Human cerebrum using MAG Monoclonal Antibody at dilution of 1:100.

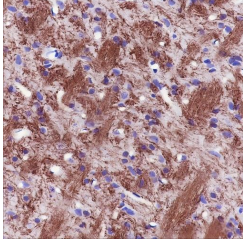


Immunohistochemistry of paraffin-embedded Human liver(Negative tissue) using MAG Monoclonal Antibody at dilution of 1:100.



Immunohistochemistry of paraffin-embedded Rat striatum using MAG Monoclonal Antibody at dilution of 1:100.

For Research Use Only



Immunohistochemistry of paraffin-embedded Mouse striatum
using MAG Monoclonal Antibody at dilution of 1:100.

Preparation & Storage

Storage Store at -20°C Valid for 12 months. Avoid freeze / thaw cycles.
Shipping Ice bag

Background

MAG (Myelin-associated glycoprotein) is a type I transmembrane glycoprotein expressed by Schwann cells and oligodendrocytes, that has been implicated in the control of axonal growth in many neuronal populations including cerebellar granule neurons (CGNs).

For Research Use Only

Toll-free: 1-888-852-8623
Web: www.elabscience.com

Tel: 1-832-243-6086
Email: techsupport@elabscience.com

Fax: 1-832-243-6017

Rev. V1.0