

Recombinant Human CD147/Basigin Protein (His Tag)



DIA-AN[®]
by Elabscience

Catalog Number: PKSH032377

Note: Centrifuge before opening to ensure complete recovery of vial contents.

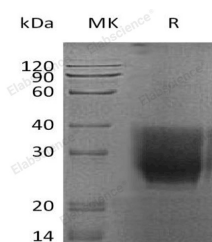
Description

Synonyms	Basigin;5F7;Collagenase Stimulatory Factor;Extracellular Matrix Metalloproteinase Inducer;EMMPRIN;Leukocyte Activation Antigen M6;OK Blood Group Antigen;Tumor Cell-Derived Collagenase Stimulatory Factor;TCSF;CD147;BSG
Species	Human
Expression Host	HEK293 Cells
Sequence	Ala22-His205
Accession	P35613-2
Calculated Molecular Weight	21.2 kDa
Observed molecular weight	30-40 kDa
Tag	C-His

Properties

Purity	> 95 % as determined by reducing SDS-PAGE.
Endotoxin	< 1.0 EU per µg of the protein as determined by the LAL method.
Storage	Generally, lyophilized proteins are stable for up to 12 months when stored at -20 to -80°C. Reconstituted protein solution can be stored at 4-8°C for 2-7 days. Aliquots of reconstituted samples are stable at < -20°C for 3 months.
Shipping	This product is provided as lyophilized powder which is shipped with ice packs.
Formulation	Lyophilized from a 0.2 µm filtered solution of 20mM PB, 150mM NaCl, pH 7.2. Normally 5 % - 8 % trehalose, mannitol and 0.01% Tween80 are added as protectants before lyophilization. Please refer to the specific buffer information in the printed man
Reconstitution	Please refer to the printed manual for detailed information.

Data



> 95 % as determined by reducing SDS-PAGE.

Background

Extracellular Matrix Metalloproteinase Inducer (EMMPRIN) belongs to the immunoglobulin superfamily, which has the homology to both the immunoglobulin V domain and MHC class II antigen β -chain. EMMPRIN is a transmembrane glycoprotein with different forms, resulting from different modes of glycosylation and N-terminal sequence variants. EMMPRIN can be expressed in breast cancer, oral squamous cell carcinoma, glioma, lymphoma, lung, bladder, and melanoma carcinomas cells. EMMPRIN promotes invasion, metastasis, growth, and survival of malignants cells, serves as a receptor for extracellular cyclophilinthe, may play a role in signal transduction.

For Research Use Only

A Reliable Research Partner in Life Science and Medicine

Toll-free: 1-888-852-8623

Web: www.elabscience.com

Tel: 1-832-243-6086

Email: techsupport@elabscience.com

Fax: 1-832-243-6017