

SPATA20 Polyclonal Antibody

catalog number: E-AB-16072

Note: Centrifuge before opening to ensure complete recovery of vial contents.

Description

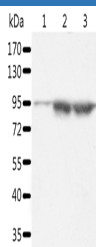
| | |
|---------------------|--|
| Reactivity | Human |
| Immunogen | Synthetic peptide of human SPATA20 |
| Host | Rabbit |
| Isotype | IgG |
| Purification | Affinity purification |
| Conjugation | Unconjugated |
| buffer | Phosphate buffered solution, pH 7.4, containing 0.05% stabilizer and 50% glycerol. |

Applications

Recommended Dilution

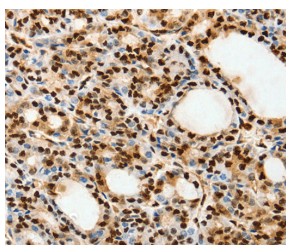
| | |
|------------|--------------|
| WB | 1:500-1:2000 |
| IHC | 1:100-1:300 |

Data

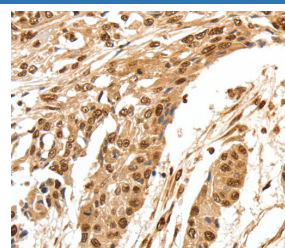


Western Blot analysis of A549 and Incap cell, Human seminoma tissue using SPATA20 Polyclonal Antibody at dilution of 1:1000

Calculated-MV:88 kDa



Immunohistochemistry of paraffin-embedded Human thyroid cancer using SPATA20 Polyclonal Antibody at dilution of 1:70



Immunohistochemistry of paraffin-embedded Human esophagus cancer using SPATA20 Polyclonal Antibody at dilution of 1:70

Preparation & Storage

| | |
|-----------------|--|
| Storage | Store at -20°C Valid for 12 months. Avoid freeze / thaw cycles. |
| Shipping | The product is shipped with ice pack, upon receipt, store it immediately at the temperature recommended. |

Background

The protein may play a role in fertility regulation. It were significantly upregulated in individual bile samples from Cholangiocarcinoma patients by Western blotting and Immunohistochemistry, relative to normal tissues. It acts as a potential serum diagnostic biomarker for Cholangiocarcinoma.

For Research Use Only