

Recombinant Human PYM1/WIBG Protein (His Tag)

Catalog Number: PKSH032857



Note: Centrifuge before opening to ensure complete recovery of vial contents.

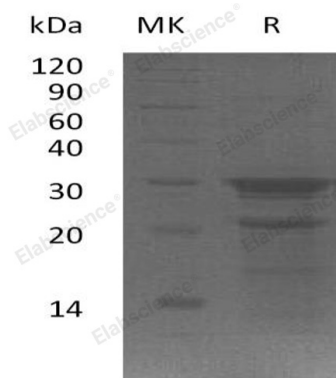
Description

Species	Human
Mol_Mass	23.7 kDa
Accession	Q9BRP8
Bio-activity	Not validated for activity

Properties

Purity	> 80 % as determined by reducing SDS-PAGE.
Endotoxin	< 1.0 EU per µg of the protein as determined by the LAL method.
Storage	Store at < -20°C, stable for 6 months. Please minimize freeze-thaw cycles.
Shipping	This product is provided as liquid. It is shipped at frozen temperature with blue ice/gel packs. Upon receipt, store it immediately at < -20°C.
Formulation	Supplied as a 0.2 µm filtered solution of 20mM Tris-HCl, 100mM NaCl, 10% Glycerol, pH 8.0.
Reconstitution	Not Applicable

Data



> 80 % as determined by reducing SDS-PAGE.

Background

Partner of Y14 and Mago (WIBG) is a key regulator of the Exon Junction Complex (EJC). EJC is a multiprotein complex that associates immediately upstream of the exon-exon junction on mRNAs, is a positional landmark for the intron exon structure of genes, and directs post-transcriptional processes in the cytoplasm, for instance mRNA export, nonsense-mediated mRNA decay or translation. WIBG is a cytoplasmic RNA-binding protein, it can be excluded from nucleus by Crml. WIBG as a cooperating partner of Mago-14, relates with Mago-14 by its N-terminal domain.

For Research Use Only