

SNX2 Polyclonal Antibody

Catalog Number: E-AB-16865



Note: Centrifuge before opening to ensure complete recovery of vial contents.

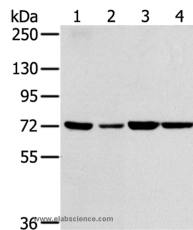
Description

Reactivity	Human, Mouse
Immunogen	Synthetic peptide of human SNX2
Host	Rabbit
Isotype	IgG
Purification	Affinity purification
Conjugation	Unconjugated
Formulation	PBS with 0.05% sodium azide and 50% glycerol, PH7.4

Applications Recommended Dilution

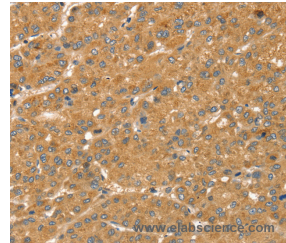
WB	1:500-1:2000
IHC	1:25-1:100

Data

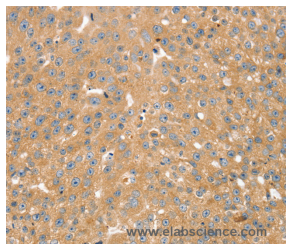


Western Blot analysis of NIH/3T3, A549, 293T and hela cell using SNX2 Polyclonal Antibody at dilution of 1:300

Calculated Mw: 58kDa



Immunohistochemistry of paraffin-embedded Human liver cancer using SNX2 Polyclonal Antibody at dilution of 1:40



Immunohistochemistry of paraffin-embedded Human breast cancer using SNX2 Polyclonal Antibody at dilution of 1:40

Preparation & Storage

Storage Store at -20°C. Avoid freeze / thaw cycles.

Background

This gene belongs to the sorting nexin family whose members contain the phosphoinositide-binding phox (PX) domain. The encoded protein is a component of the retromer complex which plays a role in protein sorting in the endocytic pathway. This protein may form oligomeric complexes with other family members. Alternate splicing results in multiple

For Research Use Only

A Reliable Research Partner in Life Science and Medicine

Toll-free: 1-888-852-8623

Web: www.elabscience.com

Tel: 1-832-243-6086

Email: techsupport@elabscience.com

Fax: 1-832-243-6017

SNX2 Polyclonal Antibody

Catalog Number: E-AB-16865



transcript variants of this gene. Pseudogenes associated with this gene are located on chromosomes 1 and 7.

For Research Use Only

A Reliable Research Partner in Life Science and Medicine

Toll-free: 1-888-852-8623

Tel: 1-832-243-6086

Fax: 1-832-243-6017

Web: www.elabscience.com

Email: techsupport@elabscience.com