

IPO11 Polyclonal Antibody

Catalog Number: E-AB-52788



Note: Centrifuge before opening to ensure complete recovery of vial contents.

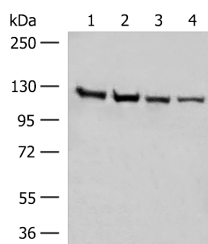
Description

Reactivity	Human, Mouse
Immunogen	Fusion protein of human IPO11
Host	Rabbit
Isotype	IgG
Purification	Antigen affinity purification
Conjugation	Unconjugated
Formulation	PBS with 0.05% NaN ₃ and 40% Glycerol, pH7.4

Applications Recommended Dilution

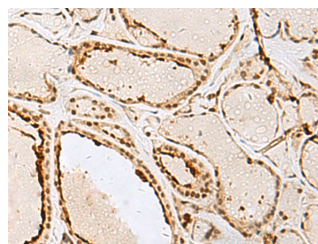
WB	1:500-1:2000
IHC	1:40-1:200
ELISA	1:5000-1:10000

Data



Western blot analysis of Human fetal brain tissue K562 cell HeLa and A172 cell lysates using IPO11 Polyclonal Antibody at dilution of 1:450

Observed Mw: Refer to figures
Calculated Mw: 113 kDa



Immunohistochemistry of paraffin-embedded Human thyroid cancer tissue using IPO11 Polyclonal Antibody at dilution of 1:65 (×200)

Preparation & Storage

Storage Store at -20°C. Avoid freeze / thaw cycles.

Background

Importins, including IPO11, are members of the karyopherin/importin-beta family of transport receptors (see KPNB1; 602738) that mediate nucleocytoplasmic transport of protein and RNA cargoes (Plafker and Macara, 2000 [PubMed 11032817]).

For Research Use Only

A Reliable Research Partner in Life Science and Medicine

Toll-free: 1-888-852-8623

Web: www.elabscience.com

Tel: 1-832-243-6086

Email: techsupport@elabscience.com

Fax: 1-832-243-6017