

Recombinant Human Neuroplastin/NPTN Protein (His Tag)



Catalog Number:PKSH032801

Note: Centrifuge before opening to ensure complete recovery of vial contents.

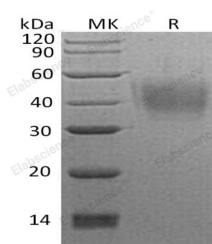
Description

Synonyms	Neuroplastin;Stromal Cell-Derived Receptor 1;SDR-1;NPTN;SDFR1;SDR1
Species	Human
Expression Host	HEK293 Cells
Sequence	Gln29-His220
Accession	Q9Y639
Calculated Molecular Weight	22.7 kDa
Observed molecular weight	35-55 kDa
Tag	C-His

Properties

Purity	> 95 % as determined by reducing SDS-PAGE.
Endotoxin	< 1.0 EU per µg of the protein as determined by the LAL method.
Storage	Generally, lyophilized proteins are stable for up to 12 months when stored at -20 to -80°C. Reconstituted protein solution can be stored at 4-8°C for 2-7 days. Aliquots of reconstituted samples are stable at < -20°C for 3 months.
Shipping	This product is provided as lyophilized powder which is shipped with ice packs.
Formulation	Lyophilized from a 0.2 µm filtered solution of 20mM PB, 150mM NaCl, pH 7.2. Normally 5 % - 8 % trehalose, mannitol and 0.01% Tween80 are added as protectants before lyophilization. Please refer to the specific buffer information in the printed man
Reconstitution	Please refer to the printed manual for detailed information.

Data



> 95 % as determined by reducing SDS-PAGE.

Background

Neuroplastin (NPTN) is a 52-57 kDa member of the Ig-superfamily. Neuroplastin likely serves as a cell adhesion molecule, and is widely expressed in multiple tissues. Human Neuroplastin is 282 amino acids that contains two Ig-like domains and a 38 aa cytoplasmic region. Probable homophilic and heterophilic cell adhesion molecule involved in long term potentiation at hippocampal excitatory synapses through activation of p38MAPK. Neuroplastin may also regulate neurite outgrowth by activating the FGFR1 signaling pathway. It may play a role in synaptic plasticity.

For Research Use Only

A Reliable Research Partner in Life Science and Medicine

Toll-free: 1-888-852-8623

Web: www.elabscience.com

Tel: 1-832-243-6086

Email: techsupport@elabscience.com

Fax: 1-832-243-6017