

Recombinant Human CGREF1/CGR11 Protein (His Tag)



Catalog Number: PKSH032243

Note: Centrifuge before opening to ensure complete recovery of vial contents.

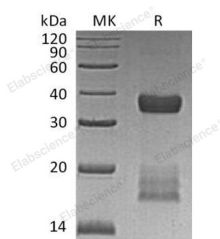
Description

Synonyms	Cell Growth Regulator with EF Hand Domain Protein 1; Cell Growth Regulatory Gene 11 Protein; Hydrophobestin; CGREF1; CGR11
Species	Human
Expression Host	HEK293 Cells
Sequence	Ala20-Ile301
Accession	A0A4W8VYG7
Calculated Molecular Weight	30.9 kDa
Observed molecular weight	29-42 kDa
Tag	C-His

Properties

Purity	> 95 % as determined by reducing SDS-PAGE.
Endotoxin	< 1.0 EU per µg of the protein as determined by the LAL method.
Storage	Generally, lyophilized proteins are stable for up to 12 months when stored at -20 to -80°C. Reconstituted protein solution can be stored at 4-8°C for 2-7 days. Aliquots of reconstituted samples are stable at < -20°C for 3 months.
Shipping	This product is provided as lyophilized powder which is shipped with ice packs.
Formulation	Lyophilized from a 0.2 µm filtered solution of 20mM Tris-HCl, 150mM NaCl, 1mM CaCl ₂ , pH 7.5. Normally 5 % - 8 % trehalose, mannitol and 0.01 % Tween80 are added as protectants before lyophilization. Please refer to the specific buffer in
Reconstitution	Please refer to the printed manual for detailed information.

Data



> 95 % as determined by reducing SDS-PAGE.

Background

Cell Growth Regulator with EF Hand Domain Protein 1 (CGREF1) is a secreted calcium ion binding protein. CGREF1 contains two EF-hand domains and both EF-hands are required for function. Human CGREF1 is synthesized as a 301 amino acid precursor that contains a 19 amino acid signal sequence, and a 282 amino acid mature chain. CGREF1 is probably digested extracellularly by an unknown serine protease generating extremely hydrophobic bioactive peptides. CGREF1 mediates cell-cell adhesion in a calcium-dependent manner. In addition, CGREF1 is able to inhibit growth in several cell lines.

For Research Use Only

A Reliable Research Partner in Life Science and Medicine

Toll-free: 1-888-852-8623

Web: www.elabscience.com

Tel: 1-832-243-6086

Email: techsupport@elabscience.com

Fax: 1-832-243-6017