

# RAB4A Polyclonal Antibody

Catalog Number: E-AB-52204



**Note:** Centrifuge before opening to ensure complete recovery of vial contents.

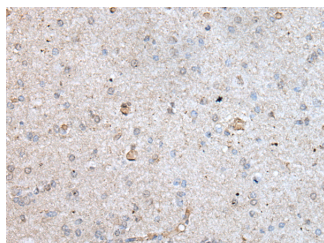
## Description

<b>Reactivity</b>	Human, Mouse, Rat
<b>Immunogen</b>	Full length fusion protein
<b>Host</b>	Rabbit
<b>Isotype</b>	IgG
<b>Purification</b>	Antigen affinity purification
<b>Conjugation</b>	Unconjugated
<b>Formulation</b>	PBS with 0.05% NaN <sub>3</sub> and 40% Glycerol, pH7.4

## Applications Recommended Dilution

<b>IHC</b>	1:30-1:150
<b>ELISA</b>	1:5000-1:10000

## Data



Immunohistochemistry of paraffin-embedded Human brain tissue using RAB4A Polyclonal Antibody at dilution of 1:40(×200)

## Preparation & Storage

**Storage** Store at -20°C. Avoid freeze / thaw cycles.

## Background

This gene is a member of the largest group in the Ras superfamily of small GTPases, which regulate membrane trafficking. The encoded protein is associated with early endosomes and is involved in their sorting and recycling. The protein also plays a role in regulating the recycling of receptors from endosomes to the plasma membrane. Alternatively spliced transcript variants have been observed for this gene.

## For Research Use Only

A Reliable Research Partner in Life Science and Medicine

Toll-free: 1-888-852-8623

Web: [www.elabscience.com](http://www.elabscience.com)

Tel: 1-832-243-6086

Email: [techsupport@elabscience.com](mailto:techsupport@elabscience.com)

Fax: 1-832-243-6017