

Recombinant Human LDH-A/LDHA Protein (His Tag)

Catalog Number:PKSH032708



Note: Centrifuge before opening to ensure complete recovery of vial contents.

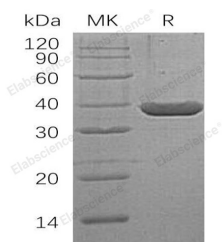
Description

Synonyms	L-Lactate Dehydrogenase A Chain;LDH-A;Cell Proliferation-Inducing Gene 19 Protein;LDH Muscle Subunit;LDH-M;Renal Carcinoma Antigen NY-REN-59;LDHA
Species	Human
Expression Host	E.coli
Sequence	Met 1-Phe332
Accession	P00338
Calculated Molecular Weight	38.8 kDa
Observed molecular weight	37 kDa
Tag	N-His

Properties

Purity	> 95 % as determined by reducing SDS-PAGE.
Endotoxin	< 1.0 EU per µg of the protein as determined by the LAL method.
Storage	Store at < -20°C, stable for 6 months. Please minimize freeze-thaw cycles.
Shipping	This product is provided as liquid. It is shipped at frozen temperature with blue ice/gel packs. Upon receipt, store it immediately at < - 20°C.
Formulation	Supplied as a 0.2 µm filtered solution of 20mM Tris-HCl, 500mM NaCl, 5% Trehalose, 5% Mannitol, 0.01% Tween80, 1mM EDTA, 50% Glycerol, pH8.0.
Reconstitution	Not Applicable

Data



> 95 % as determined by reducing SDS-PAGE.

Background

L-Lactate Dehydrogenase A Chain (LDHA) is an enzyme that catalyzes the conversion of L-lactate and NAD⁺ to pyruvate and NADH in the final step of anaerobic glycolysis. LDHA contains an N-terminal coenzyme binding region, a central catalytic site, and at least nine utilized Lys acetylation and two Tyr phosphorylation sites. LDHA belongs to the lactate dehydrogenase family, expressed predominantly in muscle tissue. LDHA mutations have been linked to exertional myoglobinuria.

For Research Use Only

A Reliable Research Partner in Life Science and Medicine

Toll-free: 1-888-852-8623

Web: www.elabscience.com

Tel: 1-832-243-6086

Email: techsupport@elabscience.com

Fax: 1-832-243-6017