

# PIP Polyclonal Antibody

catalog number: E-AB-11260

**Note:** Centrifuge before opening to ensure complete recovery of vial contents.

## Description

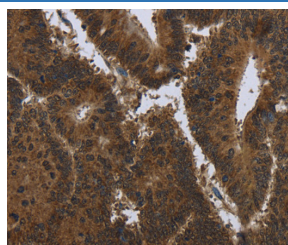
<b>Reactivity</b>	Human
<b>Immunogen</b>	Recombinant protein of human PIP
<b>Host</b>	Rabbit
<b>Isotype</b>	IgG
<b>Purification</b>	Affinity purification
<b>Conjugation</b>	Unconjugated
<b>buffer</b>	Phosphate buffered solution, pH 7.4, containing 0.05% stabilizer and 50% glycerol.

## Applications

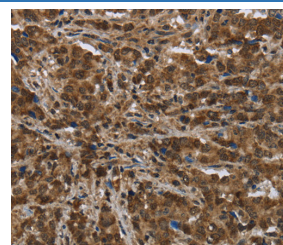
## Recommended Dilution

<b>IHC</b>	1:100-1:300
------------	-------------

## Data



Immunohistochemistry of paraffin-embedded Human colon cancer tissue using PIP Polyclonal Antibody at dilution 1:50



Immunohistochemistry of paraffin-embedded Human liver cancer tissue using PIP Polyclonal Antibody at dilution 1:50

## Preparation & Storage

<b>Storage</b>	Store at -20°C Valid for 12 months. Avoid freeze / thaw cycles.
<b>Shipping</b>	The product is shipped with ice pack, upon receipt, store it immediately at the temperature recommended.

## Background

The hormonally responsive prolactin-inducible protein (PIP) gene is expressed in benign and malignant breast tumor tissues and in some normal exocrine organs such as sweat, salivary, and lacrimal glands.

## For Research Use Only