

ALS2CR11 Polyclonal Antibody

Catalog Number: E-AB-10786



Note: Centrifuge before opening to ensure complete recovery of vial contents.

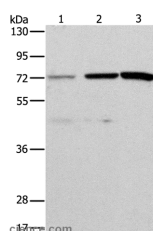
Description

Reactivity	Human, Mouse
Immunogen	Recombinant protein of human ALS2CR11
Host	Rabbit
Isotype	IgG
Purification	Affinity purification
Conjugation	Unconjugated
Formulation	PBS with 0.05% sodium azide and 50% glycerol, PH7.4

Applications Recommended Dilution

WB	1:200-1:1000
-----------	--------------

Data



Western Blot analysis of HeLa and SKOV3 cell, Mouse liver tissue using ALS2CR11 Polyclonal Antibody at dilution of 1:500

Calculated Mw: 71kDa

Preparation & Storage

Storage Store at -20°C. Avoid freeze / thaw cycles.

Background

This gene has highly expression in digestive system component and liver, biliary system. It may have four isoforms that produced by alternative splicing. Transcription profiling of human mesenchymal stem cells transformed with lentiviral vectors of TERT, E6, SV40 and RAS.

For Research Use Only

A Reliable Research Partner in Life Science and Medicine

Toll-free: 1-888-852-8623

Web: www.elabscience.com

Tel: 1-832-243-6086

Email: techsupport@elabscience.com

Fax: 1-832-243-6017