

HIF1AN Polyclonal Antibody

Catalog Number: E-AB-13556



Note: Centrifuge before opening to ensure complete recovery of vial contents.

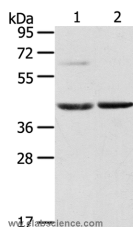
Description

Reactivity	Human, Mouse
Immunogen	Synthetic peptide of human HIF1AN
Host	Rabbit
Isotype	IgG
Purification	Affinity purification
Conjugation	Unconjugated
Formulation	PBS with 0.05% sodium azide and 50% glycerol, PH7.4

Applications Recommended Dilution

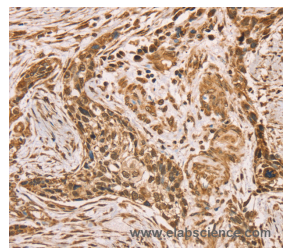
WB	1:500-1:2000
IHC	1:50-1:300

Data

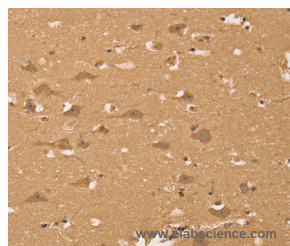


Western Blot analysis of Mouse brain and liver tissue using HIF1AN Polyclonal Antibody at dilution of 1:200

Calculated Mw: 40kDa



Immunohistochemistry of paraffin-embedded Human esophagus cancer using HIF1AN Polyclonal Antibody at dilution of 1:40



Immunohistochemistry of paraffin-embedded Human brain using HIF1AN Polyclonal Antibody at dilution of 1:40

Preparation & Storage

Storage Store at -20°C. Avoid freeze / thaw cycles.

Background

Factor inhibiting HIF-1 (FIH-1) exists as a homodimer and binds to HIF-1alpha. Specifically, FIH-1 operates as an asparaginyl hydroxylase. It catalyzes the hydroxylation of the beta-carbon of Asparagine residue 803 within the carboxy terminal transactivation domain of HIF-1alpha. This hydroxylation event blocks the association of HIF-1alpha with co-

For Research Use Only

A Reliable Research Partner in Life Science and Medicine

Toll-free: 1-888-852-8623

Web: www.elabscience.com

Tel: 1-832-243-6086

Email: techsupport@elabscience.com

Fax: 1-832-243-6017

HIF1AN Polyclonal Antibody

Catalog Number: E-AB-13556



activators. FIH-1 also binds to von Hippel-Lindau (VHL) tumor suppressor protein, which represses transcriptional activity of HIF-1alpha. In transiently transfected human osteosarcoma cells, FIH-1 localizes to the cytoplasm.

For Research Use Only

A Reliable Research Partner in Life Science and Medicine

Toll-free: 1-888-852-8623

Tel: 1-832-243-6086

Fax: 1-832-243-6017

Web: www.elabscience.com

Email: techsupport@elabscience.com