

GFP Monoclonal Antibody

catalog number: E-AB-48010

Note: Centrifuge before opening to ensure complete recovery of vial contents.

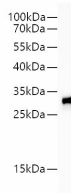
Description

Reactivity	All
Immunogen	Recombinant GFP protein expressed by E.coli
Host	Mouse
Isotype	IgG2a
Clone	5B5
Purification	Protein A/G Purification
Conjugation	Unconjugated
buffer	PBS, pH 7.2. Contains 0.05% proclin 300.

Applications

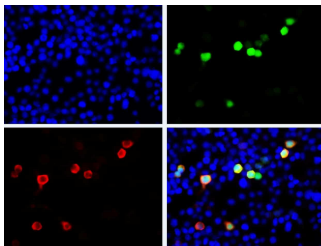
Applications	Recommended Dilution
WB	1:100000-200000
IP	3µg/sample
IF	1:8000-16000
FCM	0.2µg

Data

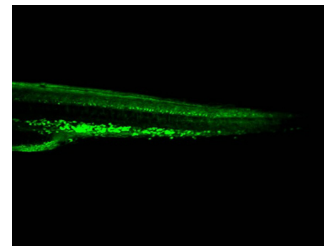


Western blot of eGFP protein with anti-eGFP at dilution of 1:80000.

Observed-MV:32 kDa
Calculated-MV:32 kDa



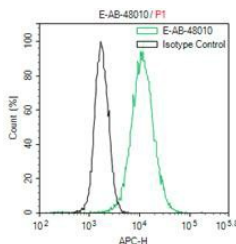
Immunofluorescent analysis of 293F cells transfected with the FLAG-GFP, using anti-GFP-Tag Monoclonal Antibody at dilution of 1:8000.



Immunohistochemical analysis of transgenic zebrafish embryo with anti-GFP antibody at dilution of 1:800.



IP Result of 293 cells transfected with GFP-Tag fusion protein, using anti-GFP-Tag mouse monoclonal antibody. Lane 1: input, lane 2: mouse IgG2a Isotype Control, Lane 3: anti-GFP-Tag monoclonal antibody



For Research Use Only

GFP Monoclonal Antibody

catalog number: E-AB-48010



1x10⁶ CHO cells Transfected with a GFP plasmid were stained with 0.2ug Anti-GFP tag mAb(E-AB-48010) and AF647 conjugated Goat Anti-mouse IgG (H+L);isotype Control stained with 0.2ug mouse IgG and AF647 conjugated Goat Anti-mouse IgG (H+L)

Preparation & Storage

Storage	Store at -20°C Valid for 12 months. Avoid freeze / thaw cycles.
Shipping	The product is shipped with ice pack,upon receipt,store it immediately at the temperature recommended.

Background

The green fluorescent protein (GFP) is a protein that exhibits bright green fluorescence when exposed to light in the blue to ultraviolet range. It is first isolated from the jellyfish *Aequorea victoria* and is frequently used as a reporter of expression. GFP is widely used in gene expression, tracing and protein subcellular localization.

For Research Use Only

A Reliable Research Partner in Life Science and Medicine
Tel: 400-999-2100

Email:techsupport@elabscience.cn

Web:www.elabscience.cn

Rev. V2.2