

## PE Anti-Human/Mouse KLRG-1 Antibody[2F1]

Catalog Number: E-AB-F1273UD

Note: Centrifuge before opening to ensure complete recovery of vial contents.

### Description

<b>Reactivity</b>	Human;Mouse
<b>Host</b>	Syrian Hamster
<b>Isotype</b>	Syrian Hamster IgG
<b>Clone No.</b>	2F1
<b>Isotype Control</b>	PE Syrian Hamster IgG Isotype Control[SHG-1] [Product E-AB-F09763D]
<b>Conjugation</b>	PE
<b>Conjugation Information</b>	PE is designed to be excited by the Blue (488 nm), Green (532 nm) and Yellow-Green (561 nm) lasers and detected using an optical filter centered near 575 nm (e.g., a 585/42 nm bandpass filter).
<b>Storage Buffer</b>	Phosphate buffered solution, pH 7.2, containing 0.09% sodium azide and 1% BSA.

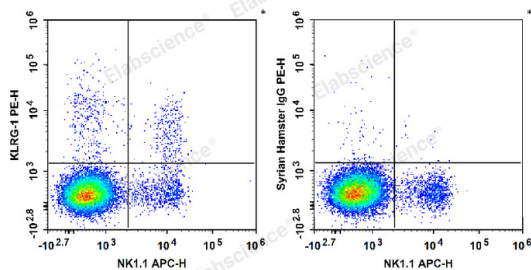
### Applications

### Recommended usage

#### FCM

Each lot of this antibody is quality control tested by flow cytometric analysis. Please check your vial before the experiment. Since applications vary, the appropriate dilutions must be determined for individual use. We suggest each investigator should titrate the reagent to obtain optimal results [The recommended concentration is 0.1-1 µg/10<sup>6</sup> cells in 100 µL volume].

### Data



C57BL/6 murine splenocytes are stained with APC Anti-Mouse CD161/NK1.1 Antibody and PE Anti-Human/Mouse KLRG-1 Antibody (Left). Splenocytes are stained with APC Anti-Mouse CD161/NK1.1 Antibody and PE Syrian Hamster IgG Isotype Control (Right).

### Preparation & Storage

<b>Storage</b>	Keep as concentrated solution. This product can be stored at 2-8°C for 12 months. Please protected from prolonged exposure to light and do not freeze.
<b>Shipping</b>	Ice bag

### Antigen Information

<b>Alternate Names</b>	2F1-Ag;MAFA
<b>Uniprot ID</b>	Q96E93;O88713

### For Research Use Only

**Gene ID**

10219,50928

**Background**

Killer cell lectin-like receptor G1 (KLRG1) is the mouse homolog of the rat mast cell function-associated antigen (MAFA or 2F1-Ag). KLRG1 is a type II membrane glycoprotein that was first identified on the surface of rat mast cell line RBL-2H3. It is composed of a homodimer of glycosylated 30-38 kD subunits. Mouse and human homologs of KLRG1 are expressed by subsets of NK cells and lymphokine-activated killer (LAK) cells but not mast cells. KLRG1 is also expressed on subsets of CD8+ and CD4+ cells, including CD4+ and CD8+ effector/memory cells, potent regulatory CD4+ T cells. KLRG1 may be involved in regulating NK cell homeostasis. KLRG21 was found to recognize cadherins and thus inhibit immune responses by regulating the effector function and the developmental processes of NK and T cells.