

Recombinant Hemoglobin alpha Monoclonal Antibody

catalog number: **AN301546L**

Note: Centrifuge before opening to ensure complete recovery of vial contents.

Description

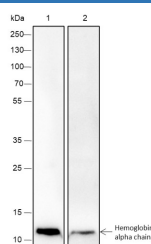
Reactivity	Human;Rat;Mouse
Immunogen	Recombinant human Hemoglobin alpha fragment
Host	Rabbit
Isotype	IgG, κ
Clone	A245
Purification	Protein A purified
Buffer	PBS, 50% glycerol, 0.05% Proclin 300, 0.05% protein protectant.

Applications

Recommended Dilution

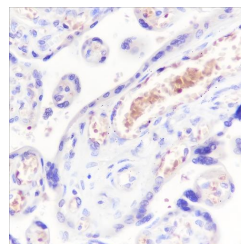
WB	1:500-1:1000
IHC	1:50

Data



Western Blot with Hemoglobin alpha Monoclonal Antibody at dilution of 1:1000. Lane 1: Mouse heart, Lane 2: Rat heart

Observed-MW:14 kDa
Calculated-MW:15 kDa



Immunohistochemistry of paraffin-embedded Human placenta using Hemoglobin alpha Monoclonal Antibody at dilution of 1:50.

Preparation & Storage

Storage	Store at -20°C Valid for 12 months. Avoid freeze / thaw cycles.
Shipping	Ice bag

Background

Hemoglobin is composed of heme and globin. The function of hemoglobin is to transport oxygen from the lungs to the tissues. Three main types of normal hemoglobin are found in adults: hemoglobin A, hemoglobin A2 and hemoglobin F, namely alpha, beta, gamma or delta, which determine the type of hemoglobin. All normal hemoglobin is a combination of alpha chain and non-alpha chain. The alpha globin gene is located on chromosome 16. Hemoglobin A consists of a pair of alpha globin chains and a pair of beta globin chains, which produce 95% to 98% of adult hemoglobin.

For Research Use Only

Toll-free: 1-888-852-8623
Web: www.elabscience.com

Tel: 1-832-243-6086
Email: techsupport@elabscience.com

Fax: 1-832-243-6017

Rev. V1.0