

# Recombinant Human CNPY4 Protein (His Tag)

Catalog Number:PKSH030652



**Note:** Centrifuge before opening to ensure complete recovery of vial contents.

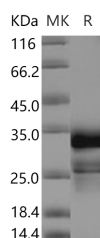
## Description

<b>Synonyms</b>	PRAT4B
<b>Species</b>	Human
<b>Expression Host</b>	HEK293 Cells
<b>Sequence</b>	Met 1-Leu248
<b>Accession</b>	Q8N129
<b>Calculated Molecular Weight</b>	27.4 kDa
<b>Observed molecular weight</b>	32 kDa
<b>Tag</b>	C-His

## Properties

<b>Purity</b>	> 85 % as determined by reducing SDS-PAGE.
<b>Endotoxin</b>	< 1.0 EU per µg of the protein as determined by the LAL method.
<b>Storage</b>	Generally, lyophilized proteins are stable for up to 12 months when stored at -20 to -80°C. Reconstituted protein solution can be stored at 4-8°C for 2-7 days. Aliquots of reconstituted samples are stable at < -20°C for 3 months.
<b>Shipping</b>	This product is provided as lyophilized powder which is shipped with ice packs.
<b>Formulation</b>	Lyophilized from sterile PBS, pH 7.4 Normally 5 % - 8 % trehalose, mannitol and 0.01 % Tween80 are added as protectants before lyophilization. Please refer to the specific buffer information in the printed manual.
<b>Reconstitution</b>	Please refer to the printed manual for detailed information.

## Data



> 85 % as determined by reducing SDS-PAGE.

## Background

CNPY4 belongs to the canopy family. CNPY4 interacts with toll-like receptor 4 (TLR4) and plays a role in the regulation of the cell surface expression of TLR4. Toll-like receptors (TLRs) recognize microbial products and induce immune responses. Lipopolysaccharide is recognized by the receptor complex consisting of TLR4 and MD-2. As CNPY4, PRAT4B also regulates cell surface expression of TLR4. PRAT4B has a signal peptide followed by a mature peptide. It is associated with the hypoglycosylated, immature form of TLR4 but not with MD-2 or TLR2.

## For Research Use Only

A Reliable Research Partner in Life Science and Medicine

Toll-free: 1-888-852-8623

Web: [www.elabscience.com](http://www.elabscience.com)

Tel: 1-832-243-6086

Email: [techsupport@elabscience.com](mailto:techsupport@elabscience.com)

Fax: 1-832-243-6017