

ITGAX Polyclonal Antibody

Catalog Number: E-AB-70017

2 Publications



Note: Centrifuge before opening to ensure complete recovery of vial contents.

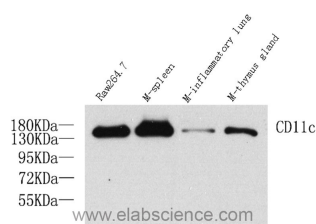
Description

Reactivity	Human, Mouse, Rat
Immunogen	KLH conjugated Synthetic peptide corresponding to Mouse CD11c
Host	Rabbit
Isotype	IgG
Purification	Affinity purification
Conjugation	Unconjugated
Formulation	PBS with 0.02% sodium azide, 1% protective protein and 50% glycerol, pH7.4

Applications Recommended Dilution

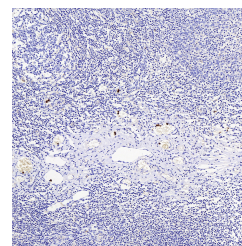
WB	1:500-1:1000
IHC	1:100-1:300
IF	1:100-1:300

Data

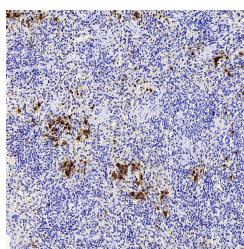


Western Blot analysis of various samples using ITGAX Polyclonal Antibody at dilution of 1:1000.

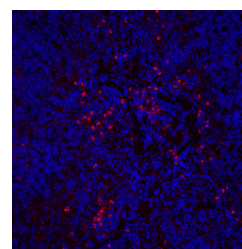
Observed Mw: 150kDa
Calculated Mw: 120-150kDa



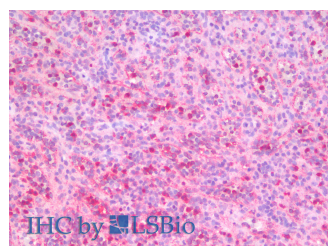
Immunohistochemistry analysis of paraffin-embedded Human amygdalitis using ITGAX Polyclonal Antibody at dilution of 1:200.



Immunohistochemistry analysis of paraffin-embedded Rat inflammatory spleen using ITGAX Polyclonal Antibody at dilution of 1:200.



Immunofluorescence analysis of Mouse inflammatory spleen using ITGAX Polyclonal Antibody at dilution of 1:200.



For Research Use Only

A Reliable Research Partner in Life Science and Medicine

Toll-free: 1-888-852-8623

Web: www.elabscience.com

Tel: 1-832-243-6086

Email: techsupport@elabscience.com

Fax: 1-832-243-6017

ITGAX Polyclonal Antibody

Catalog Number: E-AB-70017 2 Publications



Immunohistochemistry analysis of paraffin-embedded Human Spleen using ITGAX Polyclonal Antibody (Elabscience® Product Detected by Lifespan).

Preparation & Storage

Storage Store at -20°C. Avoid freeze / thaw cycles.

Background

Integrins are cell adhesion receptors that are heterodimers composed of non-covalently associated α and β subunits. CD11c/Integrin alpha X is a type I transmembrane protein present on a variety of cells, including monocytes/macrophages, granulocytes, NK cells and dendritic cells. Integrin alpha X/beta 2 acts as a receptor for fibrinogen and is important in monocyte adhesion and chemotaxis.

For Research Use Only

A Reliable Research Partner in Life Science and Medicine

Toll-free: 1-888-852-8623

Web: www.elabscience.com

Tel: 1-832-243-6086

Email: techsupport@elabscience.com

Fax: 1-832-243-6017