

Recombinant Iba1 Monoclonal Antibody

catalog number: **AN300998L**

Note: Centrifuge before opening to ensure complete recovery of vial contents.

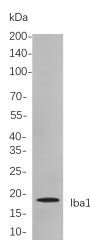
Description

Reactivity	Human;Mouse;Rat
Immunogen	Recombinant Human Iba1 protein
Host	Rabbit
Isotype	IgG, κ
Clone	B749
Purification	Protein A
Buffer	PBS, 50% glycerol, 0.05% Proclin 300, 0.05% protein protectant.

Applications

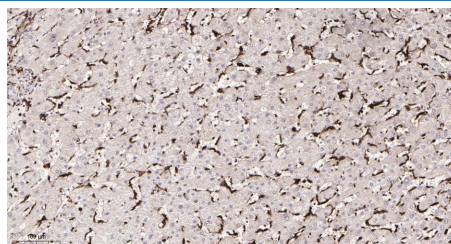
Applications	Recommended Dilution
IHC	1:2000-1:4000
WB	1:1000-1:5000
IF	1:200-1:1000
ELISA	1:5000-1:20000
IP	1:50-1:200,

Data

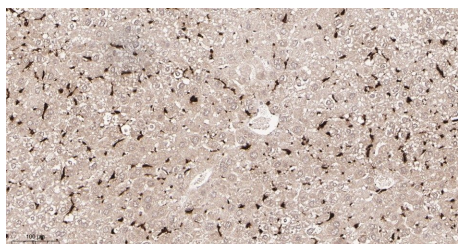


Western Blot with Recombinant Iba1 Monoclonal Antibody at dilution of 1:1000 dilution. Lane A: Mouse spleen cells.

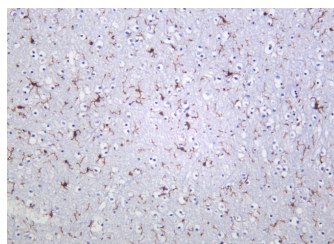
Observed-MW:17 kDa
Calculated-MW:17 kDa



Immunohistochemistry of paraffin-embedded human liver tissue using Recombinant Iba1 Monoclonal Antibody at dilution of 1:200.



Immunohistochemistry of paraffin-embedded mouse liver tissue using Recombinant Iba1 Monoclonal Antibody at dilution of 1:200.



Immunohistochemistry of paraffin-embedded human brain tissue using Recombinant Iba1 Monoclonal Antibody at dilution of 1:200.

Preparation & Storage

Storage	Store at -20°C Valid for 12 months. Avoid freeze / thaw cycles.
Shipping	Ice bag

Background

For Research Use Only

Toll-free: 1-888-852-8623
Web: www.elabscience.com

Tel: 1-832-243-6086
Email: techsupport@elabscience.com

Fax: 1-832-243-6017

Rev. V1.2

This gene encodes a protein that binds actin and calcium. This gene is induced by cytokines and interferon and may promote macrophage activation and growth of vascular smooth muscle cells and T-lymphocytes. Polymorphisms in this gene may be associated with systemic sclerosis. Alternative splicing results in multiple transcript variants, but the full-length and coding nature of some of these variants is not certain.