

# Recombinant Human PDILT Protein (His Tag)

Catalog Number:PKSH032959



**Note:** Centrifuge before opening to ensure complete recovery of vial contents.

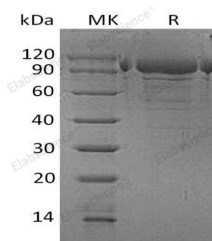
## Description

<b>Synonyms</b>	Protein Disulfide-Isomerase-Like Protein of the Testis;PDILT
<b>Species</b>	Human
<b>Expression Host</b>	HEK293 Cells
<b>Sequence</b>	Ser21-Leu584
<b>Accession</b>	Q8N807
<b>Calculated Molecular Weight</b>	65.5 kDa
<b>Observed molecular weight</b>	92 kDa
<b>Tag</b>	C-His

## Properties

<b>Purity</b>	> 90 % as determined by reducing SDS-PAGE.
<b>Endotoxin</b>	< 1.0 EU per µg of the protein as determined by the LAL method.
<b>Storage</b>	Store at < -20°C, stable for 6 months. Please minimize freeze-thaw cycles.
<b>Shipping</b>	This product is provided as liquid. It is shipped at frozen temperature with blue ice/gel packs. Upon receipt, store it immediately at < - 20°C.
<b>Formulation</b>	Supplied as a 0.2 µm filtered solution of 20mM Tris-HCl, 150mM NaCl, 10% Glycerol, pH 8.0.
<b>Reconstitution</b>	Not Applicable

## Data



> 90 % as determined by reducing SDS-PAGE.

## Background

Protein Disulfide-Isomerase-Like Protein of the Testis (PDILT) is a protein that belongs to the protein disulfide isomerase family. Human PDILT is synthesized as a 584 amino acid precursor that contains an 20 amino acid signal sequence and a 564 amino acid mature chain. PDILT contains 1 thioredoxin domain lacks the conserved redox-active Cys at position 417 which is replaced by a Ser residue, suggesting that it lacks thioredoxin activity. PDILT is an enzyme in the endoplasmic reticulum in eukaryotes. It is not a disulfide-linked homodimer. The PDILT protein can interacts with ERO1L and CLGN. PDILT probable redox-inactive chaperone involved in spermatogenesis.

## For Research Use Only

A Reliable Research Partner in Life Science and Medicine

Toll-free: 1-888-852-8623

Web: [www.elabscience.com](http://www.elabscience.com)

Tel: 1-832-243-6086

Email: [techsupport@elabscience.com](mailto:techsupport@elabscience.com)

Fax: 1-832-243-6017