

# HES2 Polyclonal Antibody

catalog number: E-AB-70254

**Note:** Centrifuge before opening to ensure complete recovery of vial contents.

## Description

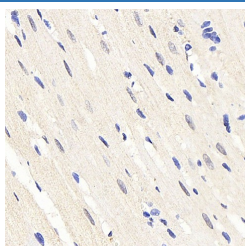
<b>Reactivity</b>	Rat
<b>Immunogen</b>	KLH conjugated Synthetic peptide corresponding to Mouse HES2
<b>Host</b>	Rabbit
<b>Isotype</b>	IgG
<b>Purification</b>	Affinity purification
<b>Conjugation</b>	Unconjugated
<b>buffer</b>	Phosphate buffered solution, pH 7.4, containing 0.05% stabilizer, 1% protein protectant and 50% glycerol.

## Applications

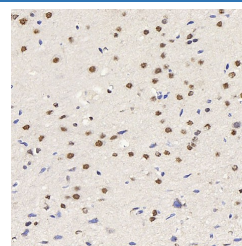
## Recommended Dilution

<b>IHC</b>	1:100-1:400
------------	-------------

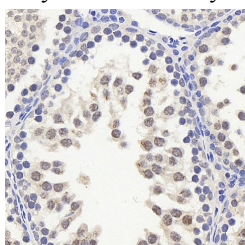
## Data



Immunohistochemistry analysis of paraffin-embedded rat heart using HES2 Polyclonal Antibody at dilution of 1:200.



Immunohistochemistry analysis of paraffin-embedded rat brain using HES2 Polyclonal Antibody at dilution of 1:200.



Immunohistochemistry analysis of paraffin-embedded rat testis using HES2 Polyclonal Antibody at dilution of 1:200.

## Preparation & Storage

<b>Storage</b>	Store at -20°C Valid for 12 months. Avoid freeze / thaw cycles.
<b>Shipping</b>	The product is shipped with ice pack, upon receipt, store it immediately at the temperature recommended.

## Background

HES2 (Hes Family BHLH Transcription Factor 2) is a Protein Coding gene. Among its related pathways are PI3K-Akt signaling pathway. Gene Ontology (GO) annotations related to this gene include transcription factor binding and double-stranded DNA binding.

## For Research Use Only