

Recombinant Human MMP1 Protein (His Tag)

Catalog Number: PKSH032740



Note: Centrifuge before opening to ensure complete recovery of vial contents.

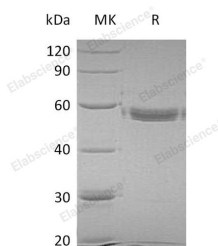
Description

Synonyms	Interstitial Collagenase; Fibroblast Collagenase; Matrix Metalloproteinase-1; MMP-1; MMP1; CLG
Species	Human
Expression Host	HEK293 Cells
Sequence	Phe20-Asn469
Accession	P03956
Calculated Molecular Weight	52.9 kDa
Observed molecular weight	56 kDa
Tag	C-His

Properties

Purity	> 95 % as determined by reducing SDS-PAGE.
Endotoxin	< 1.0 EU per µg of the protein as determined by the LAL method.
Storage	Store at < -20°C, stable for 6 months. Please minimize freeze-thaw cycles.
Shipping	This product is provided as liquid. It is shipped at frozen temperature with blue ice/gel packs. Upon receipt, store it immediately at < -20°C.
Formulation	Supplied as a 0.2 µm filtered solution of 20mM MES, 150mM NaCl, 2mM CaCl ₂ , 1mM DTT, 0.05%Brij35, 10% Glycerol, pH 5.0.
Reconstitution	Not Applicable

Data



> 95 % as determined by reducing SDS-PAGE.

Background

Matrix Metalloproteinase-1 (MMP-1) is expressed by fibroblasts, keratinocytes, endothelial cells, monocytes and macrophages. MMP1 contains several distinct domains: a prodomain that is cleaved upon activation, a catalytic domain containing the zinc binding site, a short hinge region, and a carboxyl terminal (hemopexin like) domain. MMP-1 can degrade a broad range of substrates including types I, II, III, VII, VIII, and X collagens as well as casein, gelatin, α 1 antitrypsin, myelin basic protein, L-Selectin, pro-TNF, IL1, IGFBP3, IGFBP5, pro-MMP2, and pro-MMP9. A significant role of MMP1 is the degradation of fibrillar collagens in extracellular matrix remodeling, characterized by the cleavage of the interstitial collagen triple helix into 3/4, 1/4 fragments. MMP1 may also be involved in enzyme cascades, cytokine regulation and cell surface molecule modulation.

For Research Use Only

A Reliable Research Partner in Life Science and Medicine

Toll-free: 1-888-852-8623

Web: www.elabscience.com

Tel: 1-832-243-6086

Email: techsupport@elabscience.com

Fax: 1-832-243-6017