

Recombinant Human GDF-15 protein (His tag)

Catalog Number:PDEH100401



Note: Centrifuge before opening to ensure complete recovery of vial contents.

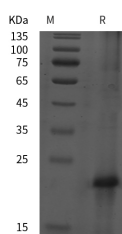
Description

Synonyms	Growth/differentiation factor 15;GDF15;GDF-15
Species	Human
Expression Host	E.coli
Sequence	Gln 151-Ile 308
Accession	Q99988
Calculated Molecular Weight	17.3 kDa
Observed molecular weight	20 kDa
Tag	C-His

Properties

Purity	> 95 % as determined by reducing SDS-PAGE.
Endotoxin	Please contact us for more information.
Storage	Generally, lyophilized proteins are stable for up to 12 months when stored at -20 to -80°C. Reconstituted protein solution can be stored at 4-8°C for 2-7 days. Aliquots of reconstituted samples are stable at < -20°C for 3 months.
Shipping	This product is provided as lyophilized powder which is shipped with ice packs.
Formulation	Lyophilized from sterile PBS, pH 7.4. Normally 5 % - 8 % trehalose, mannitol and 0.01 % Tween80 are added as protectants before lyophilization. Please refer to the specific buffer information in the printed manual.
Reconstitution	Please refer to the printed manual for detailed information.

Data



> 95 % as determined by reducing SDS-PAGE.

Background

Growth/differentiation factors (GDF-1 to GDF-15) are members of the BMP family of TGF-beta superfamily proteins. They are produced as inactive preproteins which are then cleaved and assembled into active secreted homodimers. GDF dimers are disulfide-linked with the exception of GDF-3 and -9. GDF proteins are important during embryonic development, particularly in the skeletal, nervous, and muscular systems.

For Research Use Only

A Reliable Research Partner in Life Science and Medicine

Toll-free: 1-888-852-8623

Web: www.elabscience.com

Tel: 1-832-243-6086

Email: techsupport@elabscience.com

Fax: 1-832-243-6017