

# Recombinant Human MCM5 protein (His tag)

Catalog Number:PDEH100388



**Note:** Centrifuge before opening to ensure complete recovery of vial contents.

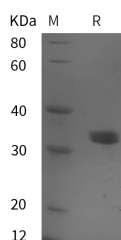
## Description

<b>Synonyms</b>	DNA replication licensing factor MCM5;MCM5; CDC46
<b>Species</b>	Human
<b>Expression Host</b>	E.coli
<b>Sequence</b>	Met 1-Asp 200
<b>Accession</b>	P33992-1
<b>Calculated Molecular Weight</b>	21.9 kDa
<b>Observed molecular weight</b>	35 kDa
<b>Tag</b>	N-His & C-His

## Properties

<b>Purity</b>	> 95 % as determined by reducing SDS-PAGE.
<b>Endotoxin</b>	Please contact us for more information.
<b>Storage</b>	Generally, lyophilized proteins are stable for up to 12 months when stored at -20 to -80°C. Reconstituted protein solution can be stored at 4-8°C for 2-7 days. Aliquots of reconstituted samples are stable at < -20°C for 3 months.
<b>Shipping</b>	This product is provided as lyophilized powder which is shipped with ice packs.
<b>Formulation</b>	Lyophilized from sterile PBS, pH 7.4. Normally 5 % - 8 % trehalose, mannitol and 0.01% Tween80 are added as protectants before lyophilization. Please refer to the specific buffer information in the printed manual.
<b>Reconstitution</b>	Please refer to the printed manual for detailed information.

## Data



> 95 % as determined by reducing SDS-PAGE.

## Background

MCM5 (Mini Chromosome Maintenance protein-5) is involved in the control of DNA replication. MCM proteins have DNA dependent ATPase motifs in their central domain which is conserved from yeast to mammals. MCM proteins form a complex which exhibits ATPase and helicase activities. In G0 phase levels of MCM 2 and 5 are lower than that of MCM7 and 3 but increase as the cell enters G1/S phase of the cell cycle. It has been reported that immunocytochemical assessment of Mcm5 expression may be of value in improving the accuracy of cervical smear testing for the detection of malignancy.

## For Research Use Only

A Reliable Research Partner in Life Science and Medicine

Toll-free: 1-888-852-8623

Web: [www.elabscience.com](http://www.elabscience.com)

Tel: 1-832-243-6086

Email: [techsupport@elabscience.com](mailto:techsupport@elabscience.com)

Fax: 1-832-243-6017